

For Serial No. 1766 and Higher

Parts Page Reorder No. PD00•62R  
Effective July, 2000

# VirtuScaler

Air Motor and Machine Parts

**Model:**  
**30303 — 2" Floor Model**

## ! WARNING

Always operate, inspect and maintain this tool in accordance with the Safety Code for portable air tools (ANSI B186.1) and any other applicable safety codes and regulations. Please refer to Dynabrade's Warning/Safety Operating Instructions for more complete safety information.

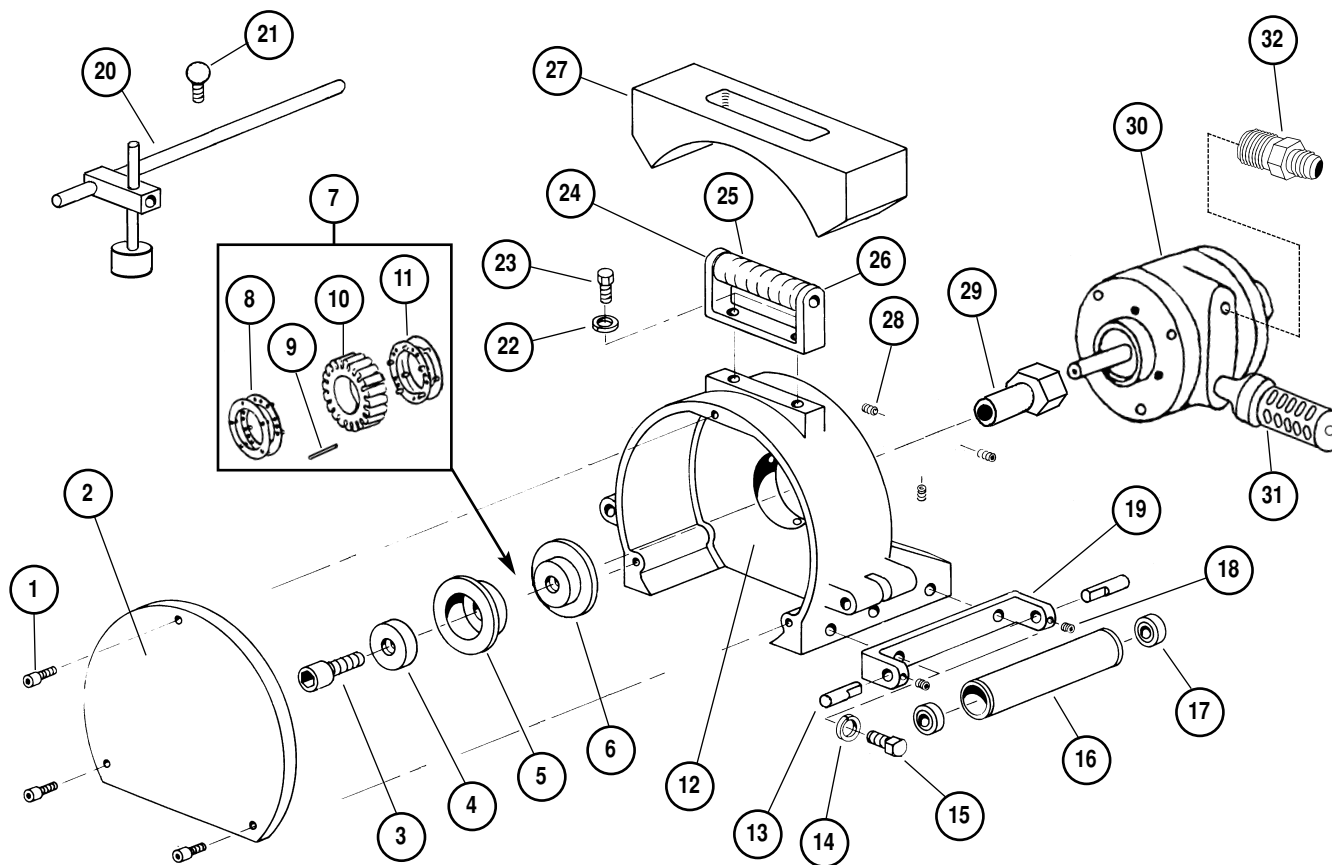
### Index Key

No. Part # Description

1	95012	Screw (3)	18	95178	Screw (4)
2	31002	Housing Cover	19	31601	Bracket (2)
3	95715	Screw	20	31620	Edge Guide Assy.
4	31010	Washer	21	95039	Thumb Screw (2)
5	31009	Flange	22	95167	Lock Washer (2)
6	31013	Flange	23	95158	Bolt (2)
7	39020	Wheel Assembly	24	31100	Handle Assembly (Incl. #22, 23, 25, 26 and 31102 Handle Rod)
8	39011A	Short Spacer	25	95169	Sponge Grip
9	33042	2" Keeper Pin (20)	26	31101	U Handle
10	39022	2" Hub	27	95189	Weight
11	39011B	Long Spacer	28	95177	Set Screw (3)
12	31020	Housing	29	31008	Wheel Arbor
13	31005	Roller Cam (4)	30	01048	Motor
14	95167	Lock Washer (4)	31	32100	Muffler
15	95179	Bolt (4)	32	95827	Adapter
16	31004	Roller (2)			
17	31006	Bearing (4)			

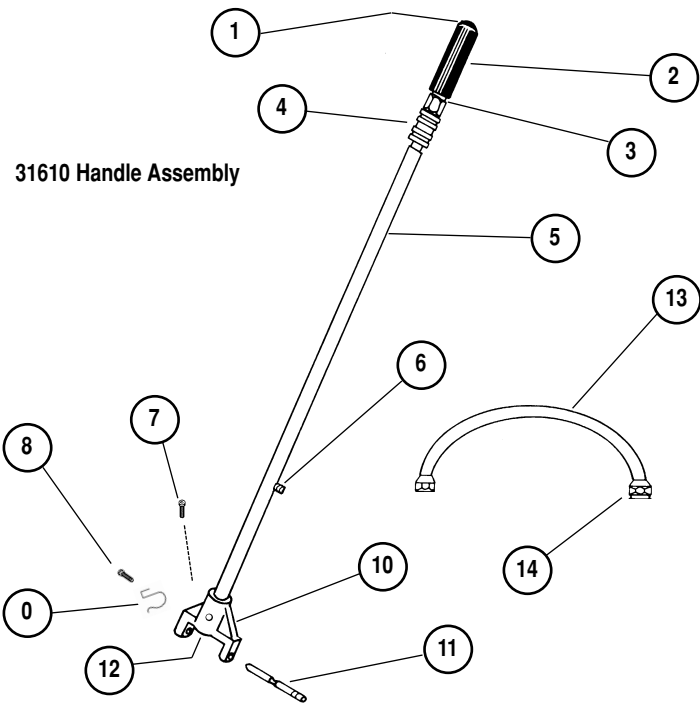
Please Indicate:

**Model #, Serial #, and RPM** when ordering replacement parts.  
Use only genuine Dynabrade replacement parts.

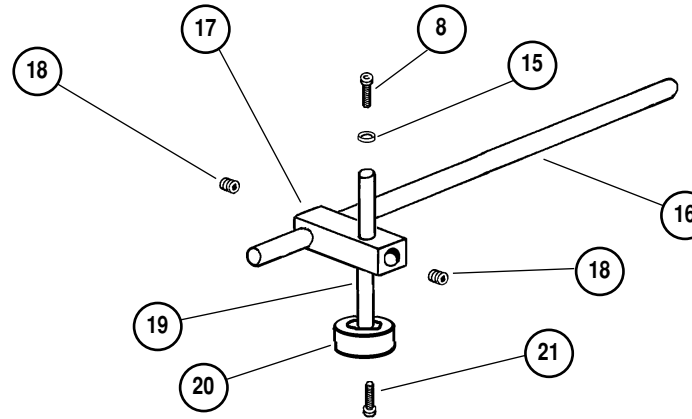


Machine Number	Length Inch (mm)	Weight Pounds (kg)	Spindle Thread	Roto-Peen Size Inch (mm)	Air Flow Rate SCFM (LPM)	Sound Level	Motor HP (W)	RPM (Loaded)	Air Pressure PSI (Bars)
30303	8-3/4" (222)	44.2 lbs. (20)	1/2"-20 male	2" (51)W	163 (4,600)	87 dBA	1.7 (1,268)	1,650	60 (4.1)

**Additional Specifications:** Height 11" (279 mm) • Air Inlet Thread 3/8" (9 mm) NPT • Hose I.D. Size 1/2" (13 mm)



31620 Edge Guide Assembly



Index Key		
No.	Part	Description
1	95825	Handle Rod
2	95169	Handle Grip
3	95081	Nipple
4	32004	Slide Valve
5	95836	Handle Rod
6	95827	Coupler
7	95012	Screw
8	95207	Screw (2)
9	95196	Spring Clip
10	33007	Handle Mount
11	33006	Handle Pin
12	95561	Plug
13	95100	16" Hose
14	95095	Swivel Fitting (2)
15	95227	Washer
16	31603	Guide Rod
17	31604	Guide Block
18	95177	Screw (2)
19	31605	Guide Post
20	95057	Guide Wheel
21	95010	Screw

## Important Instructions

**Carefully read all instructions before operating or servicing any Dynabrade® Abrasive Power Tool.**

**Warning:** Hand, wrist and arm injury may result from repetitive work motion and overexposure to vibration. Eye, face, respiratory, sound and body protection must be worn while operating power tools. Failure to do so may result in serious injury or death. Follow safety procedures posted in workplace.

**Important:** All Dynabrade air tools must be used with a Filter-Regulator-Lubricator to maintain all warranties. Dynabrade recommends one drop of air lube per minute for each 10 SCFM. Dynabrade Air Lube (P/N 95842: 1pt. 473ml.) is recommended.

- Check tool speed with tachometer. If tool is operating at a higher speed than the RPM marked on the tool or operating improperly, the tool should be serviced to correct the cause before use.
- Mineral spirits are recommended when cleaning the tool and parts. Do not clean tool or parts with any solvents or oils containing acids, esters, ketones, chlorinated hydrocarbons or nitro carbons.

## Safety Instructions:



- **Important:** User of tool is responsible for following accepted safety codes such as those published by the American National Standards Institute (ANSI).
- Operate machine for one minute before application to workpiece to determine if machine is working properly and safely before work begins.
- Always disconnect power supply before changing abrasive/accessory or making machine adjustments.
- Inspect abrasives/accessories for damage or defects prior to installation on tools.
- Please refer to Dynabrade's Warning/Safety Operating Instructions Tag (Reorder No. 95903) for more complete safety information.
- **Warning:** Hand, wrist and arm injury may result from repetitive work, motion and overexposure to vibration.

Visit Our Web Site: [www.dynabrade.com](http://www.dynabrade.com)

Email: [Customer.Service@Dynabrade.com](mailto:Customer.Service@Dynabrade.com)



**DYNABRADE, INC.,** 8989 Sheridan Drive • Clarence, NY 14031-1490 • Phone: (716) 631-0100 • Fax: 716-631-2073 • International Fax: 716-631-2524  
**DYNABRADE EUROPE S.à.r.l.,** Zone Artisanale • L-5485 Wormeldange—Haut, Luxembourg • Telephone: 352 76 84 94 1 • Fax: 352 76 84 95 1  
 © DYNABRADE, INC., 2000 PRINTED IN USA