

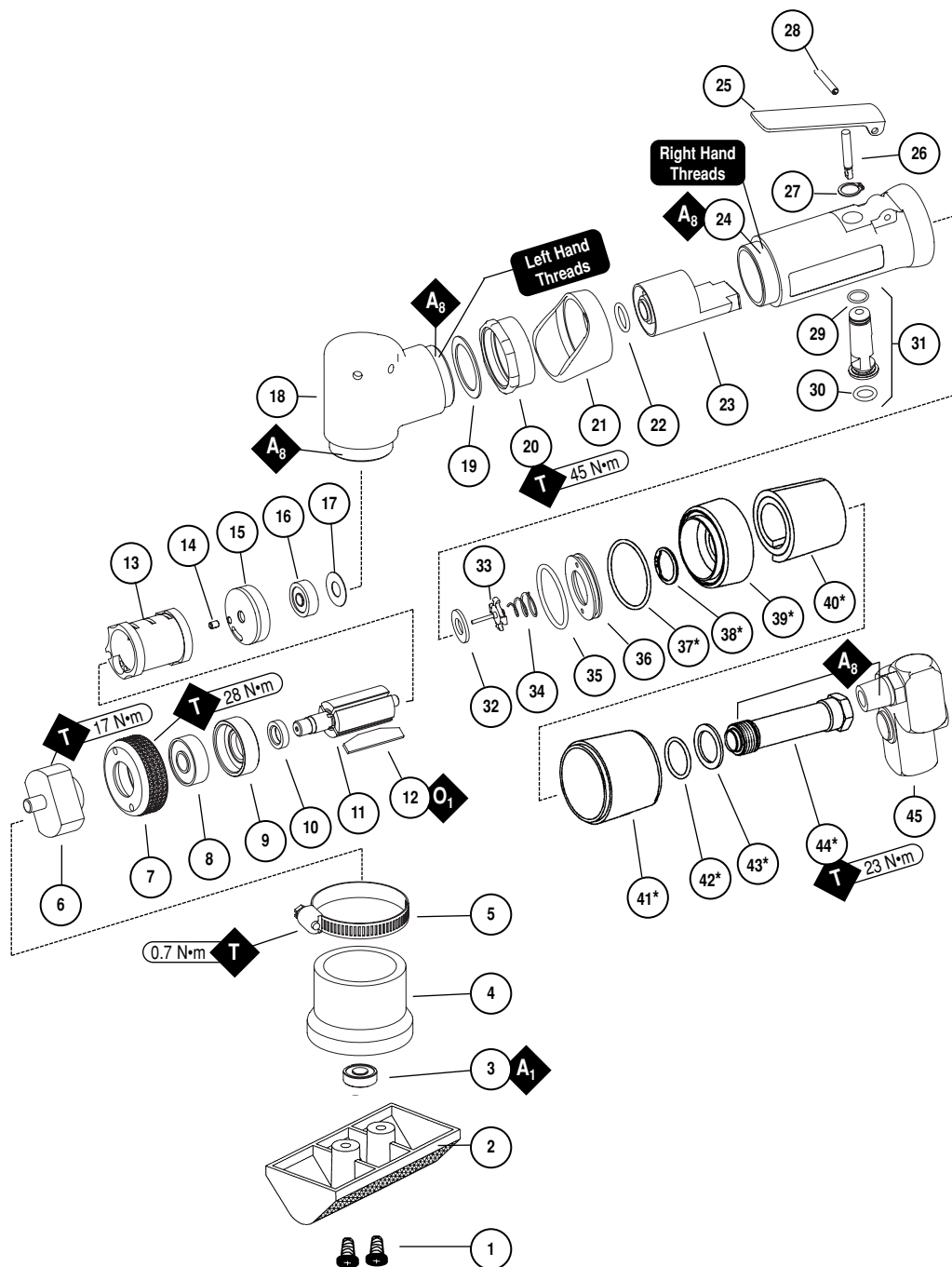
Models:**58000** – 13,000 RPM**58010** – Versatility Kit**.4 hp Dynafine® Backsplash Sanders**

Always operate, inspect and maintain this tool in accordance with the Safety Code for portable air tools (ANSI B186.1) and any other applicable safety codes and regulations. Please refer to Dynabrade's Warning/Safety Operating Instructions for more complete safety information.

Index Key

No. Part # Description

- | | | |
|-----|-------|---|
| 1 | 96258 | Screw (2) |
| 2 | 58013 | Pad Mount |
| 3 | 11016 | Bearing |
| 4 | 57975 | Boot Assembly |
| 5 | 95884 | Boot Clamp |
| 6 | 58095 | Cam Assembly |
| 7 | 57962 | Exhaust Cover |
| 8 | 02697 | Bearing |
| 9 | 02038 | Front Bearing Plate |
| 10 | 01479 | Spacer |
| 11 | 02037 | Rotor |
| 12 | 01480 | Blades (4/pkg.) |
| 13 | 01476 | Cylinder |
| 14 | 50767 | Pin |
| 15 | 02673 | Rear Bearing Plate |
| 16 | 02696 | Bearing |
| 17 | 02679 | Shield |
| 18 | 01546 | Housing |
| 19 | 01548 | Gasket |
| 20 | 01461 | Lock Nut |
| 21 | 01558 | Collar |
| 22 | 95523 | O-Ring |
| 23 | 01470 | Insert |
| 24 | 01488 | Housing |
| 25 | 95558 | Retaining Ring |
| 26 | 01449 | Valve Stem |
| 27 | 01448 | Throttle Lever |
| | 01462 | Safety Lock Lever |
| 28 | 12132 | Pin |
| 29 | 95730 | O-Ring |
| 30 | 01024 | O-Ring |
| 31 | 01469 | Speed Regulator Assy
(Includes: 95730, 01024 O-Ring) |
| 32 | 01464 | Seal |
| 33 | 01472 | Tip Valve |
| 34 | 01468 | Spring |
| 35 | 96065 | O-Ring |
| 36 | 57970 | Air Control Ring |
| 37* | 95438 | O-Ring |
| 38* | 95711 | Retaining Ring |
| 39* | 94521 | Muffler Cap |
| 40* | 94528 | Felt Muffler |
| 41* | 94522 | Muffler Cap |
| 42* | 95375 | O-Ring |
| 43* | 94526 | Spacer |
| 44* | 94523 | Inlet Adapter |
| 45 | 94407 | 1/4" Flow Control Valve |



* Note: All parts indicated by an asterisk are included in 94519 Muffler Assembly.

KEY	
O	Oil: O ₁ = Air Lube
A	Adhesive: A ₂ = Loctite #271 A ₈ = Loctite #567
T	Torque: N·m x 8.85 = In. - lbs.
G	Grease: G ₁ = Lubriplate 630 AA

Important Operating, Maintenance and Safety Instructions

Carefully read all instructions before operating or servicing any Dynabrade® Abrasive Power Tool.

Warning: Hand, wrist and arm injury may result from repetitive work motion and overexposure to vibration.

Important: All Dynabrade rotary vane air tools must be used with a Filter-Regulator-Lubricator to maintain all warranties.

Operating Instructions:

Warning: Eye, face, respiratory, sound, and body protection must be worn while operating power tools. Failure to do so may result in serious injury or death. Follow safety procedures posted in workplace.

1. With power source disconnected from tool, securely fasten abrasive/accessory on tool.
2. Install air fitting into inlet bushing of tool. **Important:** Secure inlet bushing of tool with a wrench before attempting to install the air fitting to avoid damaging valve body housing.
3. Connect power source to tool. Be careful not to depress throttle lever in the process.
4. Check tool speed with tachometer. If tool is operating at a higher speed than the RPM marked on the tool or operating improperly, the tool should be serviced to correct the cause before use.

Maintenance Instructions:

1. Check tool speed regularly with a tachometer. If tool is operating at a higher speed than the RPM marked on the tool, the tool should be serviced to correct the cause before use.
2. Some silencers on air tools may clog with use. Clean and replace as required.
3. All Dynabrade rotary vane air motors should be lubricated. Dynabrade recommends one drop of air lube per minute for each 10 SCFM (example: if the tool specifications state 40 SCFM, set the drip rate of your filter-lubricator at 4 drops per minute). Dynabrade Air Lube (P/N 95842: 1 pt. 473 ml.) is recommended.
4. An Air Line Filter-Regulator-Lubricator must be used with this air tool to maintain all warranties. Dynabrade recommends the following: **11405** Air Line Filter-Regulator-Lubricator — Provides accurate air pressure regulation, two-stage filtration of water contaminants and micro-mist lubrication of pneumatic components. Operates 40 SCFM @ 100 PSIG has 3/8" NPT female ports.
5. Use only genuine Dynabrade replacement parts. To reorder replacement parts, specify the **Model #**, **Serial #**, and **RPM** of your machine.
6. A Motor Tune-Up Kit (P/N 96236) is available which includes assorted parts to help maintain motor in peak operating condition.
7. Mineral spirits are recommended when cleaning the tool and parts. Do not clean tool or parts with any solvents or oils containing acids, esters, ketones, chlorinated hydrocarbons or nitro carbons.

Safety Instructions:

Products offered by Dynabrade should not be converted or otherwise altered from original design without expressed written consent from Dynabrade, Inc.



- **Important:** User of tool is responsible for following accepted safety codes such as those published by the American National Standards Institute (ANSI).
- Operate machine for one minute before application to workpiece to determine if machine is working properly and safely before work begins.
- Always disconnect power supply before changing abrasive/accessory or making machine adjustments.
- Inspect abrasives/accessories for damage or defects prior to installation on tools.
- Please refer to Dynabrade's Warning/Safety Operating Instructions Tag (Reorder No. 95903) for more complete safety information.

Notice

All Dynabrade motors use the highest quality parts and metals available and are machined to exacting tolerances. The failure of quality pneumatic motors can most often be traced to an unclean air supply or the lack of lubrication. Air pressure easily forces dirt or water contained in the air supply into motor bearings causing early failure. It often scores the cylinder walls and the rotor blades resulting in limited efficiency and power. Our warranty obligation is contingent upon proper use of our tools and cannot apply to equipment which has been subjected to misuse such as unclean air, wet air or a lack of lubrication during the use of this tool.

One Year Warranty

Following the reasonable assumption that any inherent defect which might prevail in a product will become apparent to the user within one year from the date of purchase, all equipment of our manufacture is warranted against defects in workmanship and materials under normal use and service. We shall repair or replace at our factory, any equipment or part thereof which shall, within one year after delivery to the original purchaser, indicate upon our examination to have been defective. Our obligation is contingent upon proper use of Dynabrade tools in accordance with factory recommendations, instructions and safety practices. It shall not apply to equipment which has been subject to misuse, negligence, accident or tampering in any way so as to affect its normal performance. Normally wearable parts such as bearings, contact wheels, rotor blades, etc., are not covered under this warranty.

Machine Specifications

Model Number	Motor hp (W)	Motor RPM	Sound Level	Air Flow Rate CFM/SCFM (LPM)	Air Pressure PSIG (Bars)	Weight Pound (kg)	Length Inch (mm)	Height Inch (mm)
58000	.15 (118)	13,000	65 dB(A)	3/20 (566)	90 (6.2)	1.6 (.7)	9 (229)	3-3/4 (95)
58010	.15 (118)	13,000	65 dB(A)	3/20 (566)	90 (6.2)	1.6 (.7)	9 (229)	3-3/4 (95)

Additional Specifications: Air Inlet Thread 1/4" NPT • Hose Size 1/4" or 8 mm

DYNABRADE, INC.

www.dynabrade.com

8989 Sheridan Drive • Clarence, NY 14031-1490 • Phone: (716) 631-0100 • Fax: 716-631-2073 • International Fax: 716-631-2524

©DYNABRADE, INC., 2004

PRINTED IN USA

PD04.57_11/04

