

1 hp Right Angle Cut-Off Tool

For Ø 5" (127mm) Diamond Wheels

For Serial No. 08E1000A and Higher

Air Tool Manual – Safety, Operation and Maintenance

SAVE THIS DOCUMENT, EDUCATE ALL PERSONNEL

Model:

52438 – 12,000 RPM

– 1-1/4" Vacuum Port

– w/Adjustable Cutting Depth

– 3/4" Arbor

FIND THE MOST CURRENT OFFERING OF SUPPORT DOCUMENTS AND ACCESSORIES @ WWW.DYNABRADE.COM

⚠ WARNING

Read and understand this tool manual before operating your air tool. Follow all safety rules for the protection of operating personnel as well as adjacent areas. Always operate, inspect and maintain this tool in accordance with the American National Standards Institute (ANSI) Safety Code for Portable Air Tools – B186.1. For additional safety information, refer to Safety Requirements for the Use, Care and Protection of Abrasive Wheels – ANSI B7.1, Code of Federal Regulation – CFR 29 Part 1910, European Committee for Standards (EN) Hand Held Non-Electric Power Tools – Safety Requirements and applicable State and Local Regulations.

SAFETY LEGEND

	⚠ WARNING Read and understand tool manual before work starts to reduce risk of injury to operator, visitors, and tool.	⚠ WARNING Practice safety requirements. Work alert, have proper attire, and do not operate tools under the influence of alcohol or drugs.	
	⚠ WARNING Eye protection must be worn at all times, eye protection to conform to ANSI Z87.1.	⚠ WARNING Ear protection to be worn when exposure to sound, exceeds the limits of applicable Federal, State or local statutes, ordinances and/or regulations.	
	⚠ WARNING Respiratory protection to be used when exposed to contaminants that exceed the applicable threshold limit values required by law.	⚠ WARNING Air line hazard, pressurized supply lines and flexible hoses can cause serious injury. Do not use damaged, frayed or deteriorated air hoses and fittings.	

⚠ WARNING

Some dust created by sanding, grinding, drilling, and other construction activities contain chemicals known to cause cancer, birth defects or other reproductive harm. Some examples of these chemicals are:

- Lead from lead-based paints
- Crystalline silica from bricks and cement and other masonry products
- Arsenic and chromium from chemically treated lumber

Your risk from these exposures varies, depending on how often you do this type of work. To reduce your exposure to these chemicals: work in a well ventilated area, and work with approved safety equipment, such as those dust masks that are specially designed to filter out microscopic particles.

SAFETY INSTRUCTIONS

Carefully Read all instructions before operating or servicing any Dynabrade® Abrasive Power Tool.

Products offered by Dynabrade are not to be modified, converted or otherwise altered from the original design without expressed written consent from Dynabrade, Inc.

Tool Intent: Right angle cut-off tools with diamond wheels are ideal for cutting and trimming fiberglass/composite materials.

Do Not Use tool for anything other than intended applications.
Do Not Use on materials that will generate spark.

Training: Proper care, maintenance, and storage of your air tools will maximize performance.

- Employer's Responsibility – Provide right angle cut-off tool with proper diamond wheel to operators with safety instructions and training for safe use of tools and accessories.

Accessory Selection:

- Use only metal cut-off wheels with diamond impregnated abrasive with 3/4" arbor hole.
- Abrasive/accessory RPM (speed) rating MUST be approved for AT LEAST the tool RPM rating.
- Before mounting an accessory, visually inspect for defects. Do not use defective accessories.
- Use only recommended accessories. Reference Dynabrade catalog and this tool manual.
- Follow tool specifications before choosing size and type of accessory.
- Only use recommended fittings and air line sizes. Air supply hoses and air hose accessories must have a minimum working pressure of 150 PSIG (10 Bars, g) or 150 percent of the maximum pressure produced in the system, whichever is higher. (See tool Machine Specifications table.)

(continued on next page)

OPERATING INSTRUCTIONS

Warning: Always wear eye protection. Operator of tool is responsible for following: accepted eye, face, respiratory, hearing and body protection.

- Always use wheel guard. Make sure it is positioned to best protect the operator and make sure it is securely fastened. Wheel guards that are worn, damaged or have been subject to a wheel breaking must be replaced.

Caution: Hand, wrist and arm injury may result from repetitive work, motion and overexposure to vibration.

- Tool RPM must never exceed abrasive/accessory RPM rating. Check accessory manufacturer for details on maximum operating speed or special mounting instructions.
- Keep hand and clothing away from working end of the air tool.
- Be sure that any loose clothing, hair and all jewelry is properly restrained.
- Check air hose and connecting fittings for condition. Repair worn or damaged parts.
- Secure inlet bushing on air tool with a wrench before attempting to install the air fitting to avoid damaging housing assembly.
- BEFORE MOUNTING A DIAMOND WHEEL, after all tool repairs and whenever a cut-off tool is issued for use, check tool RPM (speed) with tachometer with air pressure set at 90 PSIG while the tool is running. If tool is operating at a higher speed than the RPM marked on the tool housing, or operating improperly, the tool must be serviced and corrected before use.

Diamond Cut-Off Wheel Mounting

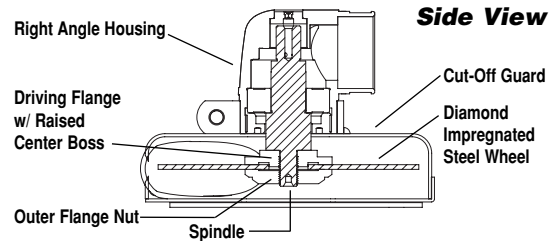
- With power source disconnected from the air tool.
- Remove wing thumb screw from guard and rotate shoe assembly to expose spindle.
- Clean spindle and flange mounting surfaces. Inspect flanges for nicks, cuts and sharp edges. (Replace damaged flanges)
- Use only Dynabrade flanges.
- Install drive flange with raised center boss facing outward.
- Inspect diamond wheel for any damage, warpage or excessive wear before mounting. (Do not use defective diamond wheels)
- Check for flange flatness and runout by rotating spindle and drive flange together.
- Install diamond cut-off wheel over spindle thread and over raised center boss on flange.
- Install outer flange nut with recessed face facing toward diamond cut-off wheel and secure flange firmly against the wheel.
- Check diamond cut-off wheel to make sure it is properly tightened down.

Caution: Over tightening the outer flange nut can cause damage to the wheel and/or flanges.

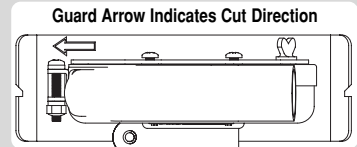
- Swing shoe assembly back into position and secure wing thumb screw.

- Connect air tool to power source. Be careful NOT to depress throttle lever in the process. Do not expose air tool to inlet pressure above 90 PSIG or (6.2 Bars).

Caution: After installing the accessory, make sure that no one is in the unguarded plane of the wheel before starting the tool. IN A PROTECTED AREA, test run the wheel at a reduced speed to check for good balance. Gradually increase tool speed. DO NOT USE if tool vibration is excessive. Correct cause, and retest to insure safe operation. Test wheel at its free speed (RPM) in a protected area for at least one minute before applying the wheel to the work.



- Make sure that work area is uncluttered, and visitors are at a safe range from the tools and debris.
- Air tools are not intended for use in explosive atmospheres and are not insulated for contact with electric power sources.
- Use a vise or clamping device to hold work piece firmly in place.
- Do not apply excessive force on tool or apply "rough" treatment to it.
- Always work with a firm footing, posture and proper lighting.
- Ensure that sparks and debris resulting from work does not create a hazard.
- This tool is rear exhaust. Exhaust may contain lubricants, vane material, bearing grease, and other materials flushed through the tool.
- When cutting-off, the workpiece shall be so supported that the slot is kept at constant or increasing width during the whole operation.
- If the diamond wheel gets jammed in a cut slot, shut off the tool and ease the wheel free. Check that the wheel is still correctly secured and not damaged before continuing the operation.
- A cut-off wheel shall not be used for side grinding.

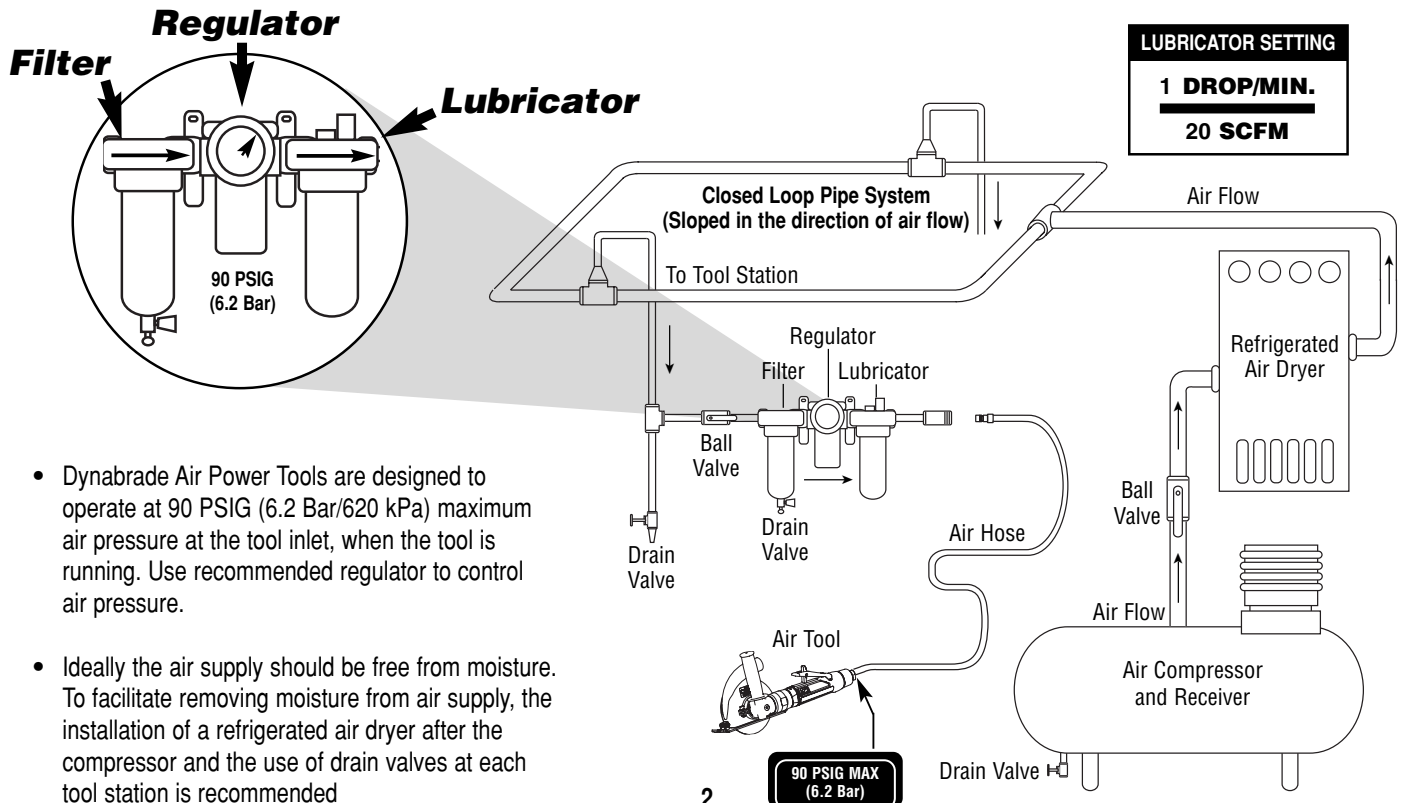


Warning: Cutting certain materials can create explosive dust. It is the employer's responsibility to notify the user of acceptable dust levels.

- Certain materials can cause sparks which can cause fires or explosions. It is the user's responsibility to make sure the work is done on spark free materials.

Report to your supervisor any condition of the tool, accessories, or operation you consider unsafe.

Air System



- Dynabrade Air Power Tools are designed to operate at 90 PSIG (6.2 Bar/620 kPa) maximum air pressure at the tool inlet, when the tool is running. Use recommended regulator to control air pressure.
- Ideally the air supply should be free from moisture. To facilitate removing moisture from air supply, the installation of a refrigerated air dryer after the compressor and the use of drain valves at each tool station is recommended

Maintenance Instructions

Important: To keep tool safe a Preventative Maintenance Program is recommended whenever portable power tools are used. The program should include inspection of air supply lines, air line pressure, proper lubrication and repair of tools. Refer to ANSI B186.1 for additional maintenance information.

- Use only genuine Dynabrade replacement parts to insure quality. To order replacement parts, specify **Model#**, **Serial#** and **RPM** of your air tool.
- It is strongly recommended that all Dynabrade rotary vane air tools be used with a Filter-Regulator-Lubricator to minimize the possibility of misuse due to unclean air, wet air or insufficient lubrication. Dynabrade recommends the following: **10681** Air Filter-Regulator-Lubricator (FRL) – Provides accurate air pressure regulation and two stage filtration of water contaminants.
- Lubricate wick system through the angle gear oil fitting with 2-3 plunges for every 24 hours of use, to achieve maximum gear life. **Important:** Use only the recommended angle gear oil for the wick system. Do not contaminate the wick with any other oil or grease product (order **95848** Gear Oil and **95541** Gun).
- Dynabrade recommends one drop of air lube per minute for each 20 SCFM (example: if the tool specification states 40 SCFM, set the drip rate on the filter-lubricator to 2 drops per minute). Dynabrade Air Lube (P/N **95842**: 1 pt 473 ml) is recommended.

Routine Preventative Maintenance:

- Check free speed of tool using a tachometer. This governor controlled tool should be speed checked every 20 hours of use or weekly, whichever occurs more frequently.
- **DO NOT** disassemble the governor for any reason. Reorder correct speed – governor assembly (See Assembly Breakdown) and recheck free speed of tool with a tachometer.
- Inspect flanges regularly for nicks, cuts, sharp edges, flatness and runout. Replace damaged or worn flanges with genuine Dynabrade flanges.
- Inspect wheel guard for wear or damage. Guards that are bent and severely worn or subject to a wheel breakage must be replaced.
- Inspect cut-off wheel before mounting. Do not mount wheels that are damaged or warped.
- Check cut-off wheel - speed rating. Rating on wheel must be greater than the tool speed marked on the housing.
- If cut-off wheel damage occurs, investigate to determine the cause and correct before issuing tool for work.

- Mineral spirits are recommended when cleaning the tool and parts. Do not clean tool or parts with any solvents or oils containing acids, esters, ketones, chlorinated hydrocarbons or nitro carbons.
- **DO NOT** clean or maintain tools with chemicals that have a low flash point (example: WD-40®).
- A Motor Tune-Up Kit (P/N **96532**) is available which includes high wear and medium wear motor parts.
- Air tool labels must be kept legible at all times, if not, reorder label(s) and replace. User is responsible for maintaining specification information i.e.: Model #, S/N, and RPM. (See Assembly Breakdown)
- Blow air supply hose out prior to initial use.
- Visually inspect air hoses and fittings for frays, visible damage and signs of deterioration. Replace damaged or worn components.
- Refer to Dynabrade's Warning/Safety Operating Instructions Tag (Reorder No. **95903**) for safety information.

After maintenance is performed on tool, add a few drops of Dynabrade Air Lube (P/N **95842**) to the air line and start the tool a few times to lubricate air motor. Check for tool vibration before mounting abrasive wheel accessory.

Handling and Storage:

- Use of tool rests, hangers and/or balancers is recommended.
- Protect tool inlet from debris (see Notice below).
- **DO NOT** carry tool by air hose or near the tool throttle lever.
- Protect cut-off wheel from exposure to water, solvents, freezing temperature and extreme temperature changes. – See Manufacturer's Instructions –
- **DO NOT USE** cut-off wheels that have been dropped or show signs of warpage, cracks, nicks or other defects.
- Store accessories in protective racks or compartments to prevent damage.

Machine Specifications

Model Number	Motor hp (W)	Tool RPM	Sound Level	Air Flow Rate SCFM (LPM)	Air Pressure PSIG (Bars)	Wheel Diameter	Weight Pound (kg)	Length Inch (mm)	Height Inch (mm)
52438	1 (746)	12,000	83 dB(A)	40 (1138)	90 (6.2)	5"	6.7 (3.0)	14-5/8 (372)	4-1/2 (114)

Additional Specifications: Air Inlet Thread 3/8" NPT • Hose I.D. Size 3/8" or 10mm • Air Flow Rate Based At Max HP. • Air Pressure 90 PSIG Max

Notice

All Dynabrade motors use the highest quality parts and metals available and are machined to exacting tolerances. The failure of quality pneumatic motors can most often be traced to an unclean air supply or the lack of lubrication. Air pressure easily forces dirt or water contained in the air supply into motor bearings causing early failure. It often scores the cylinder walls and the rotor blades resulting in limited efficiency and power. Our warranty obligation is contingent upon proper use of our tools and cannot apply to equipment which has been subjected to misuse such as unclean air, wet air or a lack of lubrication during the use of this tool.

Lifetime Warranty

All Dynabrade portable pneumatic power tools are rigorously inspected and performance tested in our factory before shipping to our customers. If a Dynabrade tool develops a performance problem and an inherent defect is found during normal use and service, Dynabrade will warrant this tool against defects in workmanship and materials for the lifetime of the tool. Upon examination and review at our factory, Dynabrade shall confirm that the tool qualifies for warranty status, and will repair or replace the tool at no charge to the customer. Normally wearable parts and products are NOT covered under this warranty. Uncovered items include bearings, contact wheels, rotor blades, regulators, valve stems, levers, shrouds, guards, O-rings, seals, gaskets and other wearable parts. Dynabrade's warranty policy is contingent upon proper use of our tools in accordance with factory recommendations, instructions and safety practices. It shall not apply to equipment that has been subjected to misuse, negligence, accident or tampering in any way so as to affect its normal performance. To activate lifetime warranty, customer must register each tool at www.dynabrade.com. Dynabrade will not honor lifetime warranty on unregistered tools. A one-year warranty will be honored on all unregistered portable pneumatic power tools. Lifetime warranty applies only to portable pneumatic tools manufactured by Dynabrade, Inc. in the USA. Lifetime warranty applies only to the original tool owner; warranty is non-transferable.

Model:
52438

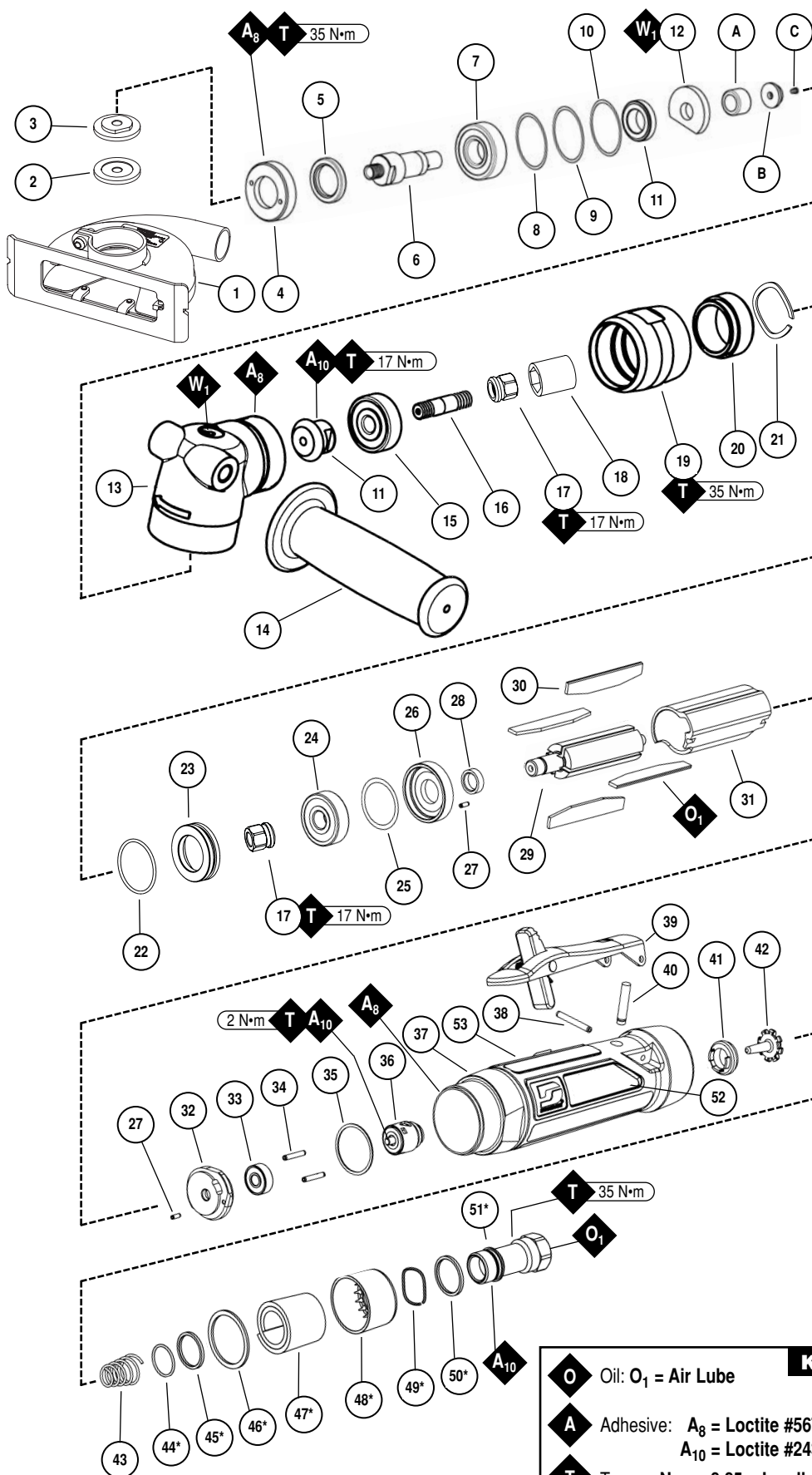
Index Key

No.	Part #	Description
1	53625	5" Cut-Off Guard – Vacuum
2	53658	Outer Flange Nut
3	53689	Drive Flange (w/raised boss)
4	50963	Retainer
5	53609	Shaft Seal
6	53611	Spindle 3/8"-24
7	97679	Bearing
8	97678	Shim (.010" Thick)
9	97677	Shim (.003" Thick)
10	97676	Shim (.001" Thick)
11	53637	Gear Set
12	53608	Wick
13	53600	Right Angle Housing Assy. Includes the following:
	A	96325 Shell Bearing
	B	53649 Gear Oil Plate
	C	01041 Gear Oil Fitting
14	53163	Side Handle
15	01266	Bearing
16	53635	Pinion Adapter
17	51969	Coupler Nut (2)
18	50902	Coupler
19	53650	Lock Ring
20	53651	Spacer
21	96498	Wave Spring
22	95438	O-Ring
23	53620	Adapter
24	54520	Bearing
25	51951	Shim Pack
26	51922	Front Bearing Plate
27	96441	Pin (2)
28	51927	Spacer
29	51921	Rotor
30	51926	Blade (4/Pkg.)
31	51925	Cylinder
32	51923	Rear Bearing Plate
33	02057	Bearing
34	96445	Pin (2)
35	51924	Gasket
36	51932	Governor Assembly
37	All Housings Include: Warning & Specification Labels	
	20070	Housing – Model 52438
38	96444	Pin
39	51949	Safety Lever Assembly
40	51946	Valve Stem Assembly (Incl. 96443 O-Ring)
41	51945	Valve Seat
42	51944	Tip Valve
43	51943	Spring
44	96442	O-Ring
45	51940	Spacer
46	53682	Gasket - Standard
	53687	Gasket - For use with overhose
47	94528	Felt Silencer
48	53686	Muffler Cap
49	94924	Wave Spring
50	53683	Spacer
51	53681	Inlet Bushing (Incl. 2 – 51938 Screens)

Label Key

No.	Part #	Description
52	00001248	Warning Label
53	00001181	Specification Label

1 hp Right Angle Cut-Off Tool for 5" Diamond Wheels
Complete Assembly



Note: All index numbers with an asterisk are included in P/N 53655 Muffler Assembly.

KEY	
O	Oil: O ₁ = Air Lube
A	Adhesive: A ₈ = Loctite #567 A ₁₀ = Loctite #243
T	Torque: N·m x 8.85 = In. - lbs.
W	Wicking: W ₁ = Gear Oil

Disassembly Instructions - 1 hp Right Angle Cut-Off Tool for 5" Diamond Wheels

Important: Manufacturing Warranty is void if tool is disassembled before warranty expires. Please refer to complete part list for part identification.
Disconnect tool from power source before tool repair.

Right Angle Head Disassembly:

1. Remove side handle, outer flange, cut-off wheel and drive flange.
2. Remove guard assembly.
3. Secure **53600** Right Angle Housing, against both side handle bosses, in a padded vise with spindle facing upward.
4. Using **97782** Pin Wrench (**ordered separately**) or an adjustable pin wrench, remove **50963** Retainer. (**Left Hand Threads**)
5. Remove **53609** Shaft Seal from spindle or retainer.
6. Pull spindle and gear assembly from housing.
7. Press spindle through **97679** Bearing and spiral bevel gear.
8. Remove shims and **53608** Wick from right angle housing.
9. Remove **53650** Lock Ring from right angle housing (**Left Hand Threads**) and from motor housing (**Right Hand Threads**).
10. Remove angle head from vise and remove **96325** Bearing by pressing **53649** Gear Oil Plate through housing.
11. Pull pinion gear, bearing and coupler sub-assembly from angle housing.
12. Secure pinion gear wrench flats and remove the **51969** Coupler Nut (twist counterclockwise).
13. Secure **53635** Adapter using **95049** 3/16" Hex Key Wrench and remove pinion gear (twist counterclockwise).
14. Press **53635** Adapter through **01266** Bearing.

Right Angle Head Disassembly Complete.

Motor Disassembly:

1. Remove **53651** Spacer and **96498** Wave Spring from housing assembly.
2. Pull motor assembly from housing, and remove **53620** Motor Adapter with **95438** O-Ring.
3. Remove governor assembly by using a slotted screwdriver. (**Left Hand Threads**)
4. Using **96209** Repair Clamp (**ordered separately**) secure **51925** Cylinder and place a 1/16" (1.5mm) drift pin to the base of the terminal thread and press the **51921** Rotor from the **02057** Rear Bearing.
5. Slide **02057** Rear Bearing from **51923** Rear Bearing Plate.
6. Remove **51925** Cylinder and **51926** Blades.
7. Secure **51921** Rotor in padded vise and remove **51969** Coupler Nut (twist counterclockwise).
8. Slide **51922** Front Bearing Plate and **51927** Rotor Spacer from **51921** Rotor.
9. Slide **54520** Bearing and shims from **51922** Front Bearing Plate.

Motor Disassembly Complete.

Housing Disassembly:

1. Secure housing using **51989** Repair Collar (**see back cover for Optional Accessories**).
2. Remove inlet bushing with muffler assembly (twist counterclockwise).
3. Remove **53682** Gasket, **51943** Spring, **96442** O-Ring, **51940** Spacer, **94528** Felt Silencer, **53686** Muffler Cap, **94924** Wave Spring and **53683** Spacer from **53681** Inlet Bushing.
4. Remove **51944** Tip Valve and **51945** Valve Seat.
5. Remove housing and **51989** Repair Collar and lay collar on bench with flange facing down so it is supporting throttle lever. Place a 3/32" (2.4mm) drift pin on **96444** Pin and tap pin thru housing.
6. Remove **51946** Valve Stem Assembly.
7. Remove **96443** O-Ring from **51946** Valve Stem Assembly.

Housing Disassembly Complete.

Assembly Instructions - 1 hp Right Angle Cut-Off Tool for 5" Diamond Wheels

Motor Assembly:

Important: Be sure parts are clean and in good repair before assembling. Follow oil, lubrication, adhesive and torque specifications.

1. Place **51921** Rotor into a padded vise with male thread facing upwards.
2. Slip **51927** Rotor Spacer over rotor shaft and down against rotor body face.
3. Press **96441** Coiled Pin into **51922** Front Bearing Plate. Make certain, coiled pin does not protrude beyond internal bearing surface.
4. Place a .002" (.05mm) shim into the base of **51922** Front Bearing Plate as an initial spacing and slide **54520** Bearing to the front plate base.
Note: **51951** Shim Pack contains .001" (.03mm) and .002" (.05mm) shims.
5. Slip bearing/bearing plate assembly onto rotor. Add one drop of Loctite® #243 (or equiv.) to **51921** Rotor 3/8"-24 male thread and screw **51969** Coupler Nut into place. Torque to 17 N•m/150 lb. in.
6. Check clearance between rotor and front bearing plate by using a .001" feeler gauge. Clearance should be between .001" (.03mm) – .0015" (.04mm). Adjust clearance by repeating steps 4 and 5 with different shims if necessary.
7. Once proper rotor gap clearance is achieved, install well lubricated **51926** Blades (4) into rotor slots. Dynabrade recommends lubricating blades with **95842** Air Lube.
8. Install **51925** Cylinder over rotor and front plate raised boss. Align coiled pin on front plate to cylinder slot.
9. Press **96441** Coiled Pin into blind hole on **51923** Rear Bearing Plate. Press (2) **96445** Coiled Pins into the back side of rear bearing plate.
10. Peel backing off **51924** Gasket and apply it firmly in place onto **51923** Rear Bearing Plate.
11. Place **51923** Rear Bearing Plate over rotor mandrel and insert raised boss on rear bearing plate into cylinder diameter, while inserting short coiled pin into cylinder slot. Be sure inlet slot on rear bearing plate line up with inlet slot on cylinder. To correct alignment flip cylinder end to end and repeat steps 8 & 9 for correct assembly.
12. Using **96243** Bearing Press Tool (**ordered separately**) press **02057** Bearing onto rotor and into **51923** Rear Bearing Plate hole until it is seated.
Important: Cylinder must fit snug between bearing plates. If too tight, rotor will not turn freely. Rotor must be lightly tapped at press fit end until rotor spins freely while still maintaining a snug fit. A loose fit will not achieve the proper preload on motor. While pressing **02057** Bearing, make certain to contact inner race of bearing

Assembly Instructions - (Continued)

13. Add one drop of Loctite® #243 (or equiv.) to governor assembly male thread and screw governor assembly into place (**Left Hand Threads**) with a slotted screwdriver. Torque to 2 N•m/18 lbs. in.
14. Install motor assembly into housing, making sure motor drops all the way into housing. **Note:** Align both **96445** Coiled Pins to slots in insert and against **51924** Gasket.
15. Install **95438** O-Ring onto **53620** Adapter and slide adapter into housing and over **54520** Bearing.
16. Place **96498** Wave Washer onto **53620** Adapter.
17. Place **50902** Coupler into **51969** Coupler Nut.

Motor Assembly Complete.

Right Angle Head Assembly:

1. Press **01041** Gear Oil Fitting into **53649** Gear Oil Plate and insert sub-assembly into right angle housing.
 2. Press **96325** Bearing into housing until it is firmly seated against **53649** Gear Oil Plate. **Important:** While pressing **96325** Bearing, make certain press tool is similar in size to the outside diameter of the bearing.
 3. Add one drop of Loctite® #243 (or equiv.) to male thread of **53635** Adapter and thread pinion using a **95049** 3/16" Hex Key Wrench and the pinion wrench flats until pinion bottoms on adapter. Unthread pinion from adapter for one full revolution.
 4. Using **96244** Bearing Press Tool (**ordered separately**) press **53635** Adapter into **01266** Bearing. **Important:** While pressing **01266** Bearing, make certain to contact inner race of bearing only.
 5. Add one drop of Loctite® #243 (or equiv.) to male thread of adapter and tighten **51969** Coupler Nut both sets of using wrench flats. Torque to 17 N•m/150 lbs. in.
 6. Insert sub-assembly into male threaded end of **53600** Right Angle Housing.
 7. Apply a small amount of Loctite® #567 (or equiv.) to **53600** Right Angle Housing thread, and install **53650** Lock Ring (**Left hand Threads**).
 8. Insert **53651** Spacer, with long length first, into **53650** Lock Ring and up against **01266** Bearing.
 9. Apply a small amount of loctite® #567 (or equiv.) to male thread of motor housing.
 10. Align **50902** Coupler onto **51969** Coupler Nut in R/A head assembly.
 11. Thread motor housing into **53650** Lock Ring (twist clockwise).
 12. Secure **53600** Right Angle Housing, against both side handle bosses, in a padded vise.
 13. Rotate motor housing and **53650** Lock Ring until throttle lever is located inline with side handle feature. Throttle lever in this position safe guards against accidental start ups of the tool. Torque lock ring to 35 N•m/310 lbs. in.
 14. Place well lubricated **53608** Wick against **96325** Bearing with flat edge towards pinion gear. (Wick must be completely saturated with Dynabrade **95848** Gear Oil before installation). **Note:** Do not contaminate wick with any other oil or grease product.
 15. Press **97679** Bearing onto spindle and against shoulder. **Important:** While pressing **97679** Bearing, make certain to contact inner race of bearing only.
 16. Press gear, with teeth facing away from bearing, onto spindle and against **97679** Bearing inner race.
 17. Insert spindle assembly into **53600** Right Angle Housing until **97679** Bearing contacts housing shoulder.
 18. Rotate Spindle while pressing down into housing to check for gear alignment and backlash. Install shims as required (minimum backlash is recommended for maximum gear life. Make certain there is clearance throughout 360° revolution).
 19. Slide **53609** Felt Seal into **50963** Retainer.
 20. Apply a small amount of Loctite® #567 (or equiv.) to the male thread of the retainer and thread into place (**Left Hand Threads**).
 21. Using **97782** Pin Wrench (**ordered separately**) or an adjustable pin wrench. Torque retainer to 35 N•m/310 lbs. in.
 22. Secure safety guard assembly firmly in place after orienting guard position to best protect the operator.
 23. Install **53689** Drive Flange with raised center boss facing outward.
 24. Install diamond cut-off wheel over spindle thread and over raised boss on drive flange.
 25. Install outer flange with recess facing toward diamond cut-off wheel and secure flange firmly against the wheel.
- Caution:** Tighten flange only enough to prevent diamond cut-off wheel from spinning under working conditions. Over tightening the flange can cause damage to the wheel and/or flanges.

Housing Assembly:

1. Secure housing using **51989** Repair Collar (**see back cover for Optional Accessories**) with inlet facing upward.
2. Slide **96443** O-Ring onto **51946** Valve Stem and slide sub-assembly until o-ring passes through housing hole. Make certain valve stem assembly slides freely after the o-ring passes through the hole.
3. Install **51945** Valve Seat by aligning 3 male prongs with three deep slots on insert. Make certain valve seat is pressed flat against base of pocket. **Note:** Add a few drops of Dynabrade Air Lube (P/N **95842**) to pocket walls before inserting **51945** Valve Seat.
4. Install **51944** Tip Valve as shown.
5. Pre-assemble muffler, slide **53683** Spacer over **53681** Inlet Bushing and up against the hex head base. Slide **94924** Wave Spring over **53681** Inlet Bushing and up against spacer. Pre roll **94528** Felt and install it in **53686** Muffler Cap. Support felt in felt/muffler cap assembly and slide **53681** Inlet Bushing thru the inside until the muffler cap assembly seats against the **94924** Wave Spring. Flare the felt and place **51940** Spacer over male thread and set **96442** O-Ring into groove at the base of thread. Return felt to unflared form. Slide **51943** Spring into bushing and up to the two **51938** screens.
6. Place **53682** Gasket over felt silencer and against **53686** Muffler Cap.
7. Apply one drop of Loctite® #243 (or equiv.) to **53681** Inlet Bushing Thread.
8. Align small inside diameter of **51943** Spring to cone point on **51944** Tip Valve and thread inlet bushing and sub-assembly into place. Torque bushing to 35 N•m/310 lbs. in.
9. Remove housing from **51989** Repair Collar and place repair collar onto the bench top with the part number identifier against the bench. Align the throttle lever holes to housing pinhole and rest the housing and throttle lever onto the legs of the repair collar. Press **96444** Coiled Pin into lever hole and center into housing.

Tool Assembly Complete. Please allow 30 minutes for adhesives to cure before operating tool.

Important: Before operating, place 2-3 drops of Dynabrade Air Lube (P/N **95842**) directly into inlet with throttle lever depressed. Operate tool for 30 seconds to allow air lube to properly lubricate internal motor components. Motor should now be tested for proper operation at 90 PSIG max. If tool operates at a higher RPM than marked on the tool or if vibration and sound levels seem abnormal, the tool should be serviced to correct the cause before use.

Preventative Maintenance Schedule

For All 1 hp Right Angle Cut-Off Tools with Ø5" (127mm) Diamond Cut-Off Wheels

This service chart is published as a guide to expectant life of component parts. The replacement levels are based on average tool usage over one year. Dynabrade Inc. considers one year usage to be 1,000 hours.

Parts Common to all Models:

LEGEND	
T	Included in Tune-up Kit
X	Type of wear, no other comments apply.
L	Easily lost. Care during assembly/disassembly.
D	Easily damaged during assembly/disassembly.
R	Replace each time tool is disassembled.



96532 – 1 hp. Motor Tune-Up Kit

Index #	Part Number	Description	Number Required	High Wear 100%	Medium Wear 70%	Low Wear 30%	Non-Wear 10%
1	53625	5" Cut-Off Guard - Vacuum	1				X
2	53658	Outer Flange Nut	1				X
3	53689	Drive Flange	1				X
4	50963	Retainer	1				X
5	53609	Shaft Seal	1	R			
6	53611	Spindle	1				X
7	97679	Bearing	1		X		
8	97678	Shim (.010" Thick)	1				X
9	97677	Shim (.003" Thick)	1				X
10	97676	Shim (.001" Thick)	1				X
11	53637	Gear Set	1			X	
12	53608	Wick	1		X		
13	53600	Right Angle Housing Assy.	1				X
A	96325	Shell Bearing	1		X		
B	53649	Gear Oil Plate	1				X
C	01041	Gear Oil Fitting	1				X
14	53163	Side Handle	1				X
15	01266	Bearing	1		X		
16	53635	Pinion Adapter	1				X
17	51969	Coupler Nut	2				X
18	50902	Coupler	1			X	
19	53650	Lock Ring	1				X
20	53651	Spacer	1				X
21	96498	Wave Spring	1		T		
22	95438	O-Ring	1				T
23	53620	Adapter	1				X
24	54520	Bearing	1		T		
25	51951	Shim Pack	1		L		
26	51922	Front Bearing Plate	1			X	
27	96441	Pin	2			X	
28	51927	Spacer	1		T		
29	51921	Rotor	1			X	
30	51926	Blade (4/pkg.)	1	T			
31	51925	Cylinder	1			X	
32	51923	Rear Bearing Plate	1			X	
33	02057	Bearing	1		T		
34	96445	Pin	2			X	
35	51924	Gasket	1		T		
36	51932	Governor Assembly	1				X
37	20070	Housing	1				X
38	96444	Pin	1		T		
39	51949	Safety Lever Assembly	1			X	
40	51946	Valve Stem Assembly	1		T		
41	51945	Valve Seat	1				X
42	51944	Tip Valve	1		T		
43	51943	Spring	1				X
44	96442	O-Ring	1		T		
45	51940	Spacer	1				X
46	53682	Gasket	1				X
47	94528	Felt Silencer	1	T			
48	53686	Muffler Cap	1				X
49	94924	Wave Spring	1				X
50	53683	Spacer	1				X
51	53681	Inlet Bushing	1				X

Note: Please refer to page 4 of tool manual for specific part number.

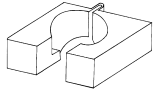
Optional Accessories

FIND THE MOST CURRENT OFFERING OF SUPPORT DOCUMENTS AND ACCESSORIES @ WWW.DYNABRADE.COM



Dynaswivel®

- Swivels 360° AT TWO PIVOT POINTS allowing the air hose to drop directly to the floor while providing superb tool handling.
- 95461** – 3/8" NPT.



51989 Repair Collar

- Specially designed collar for use in vise to prevent damage to valve body of tool during disassembly/assembly.



Dynabrade Air Lube

- Formulated for pneumatic equipment.
- Absorbs up to 10% of its weight in water.
- Prevents rust and formation of sludge.
- Keeps pneumatic tools operating longer with greater power and less down time.

95842: 1 pt. (473 ml)

95843: 1 gal. (3.8 L)



96005 Male Plug

- Provides up to twice the air flow compared to standard plug design.
- Plug has "ported" design to prevent "starving" of the air tool.



95848 Dynabrade Angle Gear Oil

- Specifically formulated to saturate wick system in right angle gear head.

95541: Gear Oil Gun



97782 Retainer Repair Tool

- Tool has a 3/8 in. square socket for use with 3/8 in. drive; breaker bar, ratchet head, or torque wrenches.



96209 Motor Repair Clamp

- Specially designed clamp to secure motor cylinder before disassembly.



96532 Motor Tune-Up Kit

- Includes assorted parts to help maintain and repair motor.

01902 Drop-In Motor

- Allows quick and easy replacement. No motor adjustments needed.



53621 Overhose Assembly

- Overhose Assembly directs exhaust away from operator.

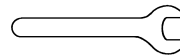


Composite-Style Coupler

- Lightweight 1.4 oz. (.05 Kg), non-marring composite material.
- Easy connect/disconnect by single push-button action.
- Shock-proof, low-vibration, crush-resistant.

94960: 1/4" Female NPT

94980: 1/4" Male NPT



95281 – 19mm open-end wrench.

96148 – 24mm pin wrench



30335 Air Supply Hose

- 3/8 in. I.D. x 60 in. Wide air supply hose, includes: 3/8 in. NPT male and female threaded fittings.

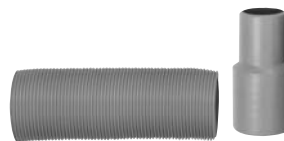


Bearing Press Tool

- Used to install bearings.

96243: For installing 02057 Bearing.

96244: For installing 01266 Bearing.



Vacuum Hoses and Cuffs

- Used to make proper connection between tool and vacuum system.

95800: 1-1/4" Reduction Cuff

54205: Vacuum Hose by the foot.

Note: Please specify length.

Reference Contact Information

1. American National Standards Institute – ANSI

25 West 43rd Street
Forth Floor
New York, NY 10036
Tel: 1 (212) 642-4900
Fax: 1 (212) 398-0023

3. European Committee for Standardization

Rue de Stassart 36
B - 1050 Brussels, Belgium

2. Government Printing Office – GPO

Superintendent of Documents
Attn. New Orders
P.O. Box 371954
Pittsburgh, PA 15250-7954
Tel: 1 (202) 512-1803

Visit Our Web Site: www.dynabrade.com

Email: Customer.Service@Dynabrade.com



DYNABRADE, INC., 8989 Sheridan Drive • Clarence, NY 14031-1490 • Phone: (716) 631-0100 • Fax: 716-631-2073 • International Fax: 716-631-2524
DYNABRADE EUROPE S.à.r.l., Zone Artisanale • L-5485 Wormeldange—Haut, Luxembourg • Telephone: 352 76 84 94 1 • Fax: 352 76 84 95 1

© DYNABRADE, INC., 2005

PRINTED IN USA