

.7 hp Extension Cut-Off Wheel Tool

Composite Housing, Right Angle

Safety, Operation and Maintenance – Save This Document and Educate All Personnel

Model	Thread	Wheel	RPM	Exhaust
54732	3/8"-24	3" Dia.	18,000	Rear
54736	3/8"-24	4" Dia.	13,500	Rear



Model 54736



Find The Most Current Offering of Support Documents and Accessories at www.Dynabrade.com

WARNING

Read and understand this tool manual before operating your air tool. Follow all safety rules for the protection of operating personnel as well as adjacent areas. Always operate, inspect and maintain this tool in accordance with the American National Standards Institute (ANSI) Safety Code for Portable Air Tools – B186.1. For additional safety information, refer to Safety Requirements for the Use, Care and Protection of Abrasive Wheels – ANSI B7.1, Code of Federal Regulation – CFR 29 Part 1910, European Committee for Standards (EN) Hand Held Non-Electric Power Tools – Safety Requirements and applicable State and Local Regulations.



Read and understand tool manual before work starts to reduce risk of injury to operator, visitors, and tool.



Eye protection must be worn at all times, eye protection to conform to ANSI Z87.1.



Ear protection to be worn when exposure to sound, exceeds the limits of applicable Federal, State or local statutes, ordinances and/or regulations.



Practice safety requirements. Work alert, have proper attire, and do not operate tools under the influence of alcohol or drugs.



Respiratory protection to be used when exposed to contaminants that exceed the applicable threshold limit values required by law.



Air line hazard, pressurized supply lines and flexible hoses can cause serious injury. Do not use damaged, frayed or deteriorated air hoses and fittings.

Some dust created by sanding, grinding, drilling, and other construction activities contain chemicals known to cause cancer, birth defects or other reproductive harm. Some examples of these chemicals are:

- Lead from lead-based paints
- Crystalline silica from bricks and cement and other masonry products
- Arsenic and chromium from chemically treated lumber

Your risk from these exposures varies, depending on how often you do this type of work. To reduce your exposure to these chemicals: work in a well ventilated area, and work with approved safety equipment, such as those dust masks that are specially designed to filter out microscopic particles.

SAFETY INSTRUCTIONS



Carefully Read and Understand the General and Grinder sections found in Tool Safety and Operating Guidelines (PN00001676) Before Handling or Using Tool.

Carefully Read all instructions before operating or servicing any Dynabrade® Abrasive Power Tool. Products offered by Dynabrade are not to be modified, converted or otherwise altered from the original design.

Tool Intent: Cut-Off Tools are ideal for cutting off and trimming steel, composites, aluminum and other materials using Type 1 reinforced straight cut-off wheels with a 3/8" center hole.

DO NOT USE Tool for Anything Other Than Its Intended Applications.

Training: Proper care, maintenance, and storage of your air tool will maximize tools performance and reduce chance for accident.

Employer's Responsibility: Provide operators with safety instructions and training for safe use of tools and accessories.

Report to Your Supervisor any Condition of the Tool, Accessories or Operation you Consider Unsafe.

MAINTENANCE INSTRUCTIONS

Important: To keep tool safe, a Preventative Maintenance Program is recommended. The program should include inspection of the tool and all related accessories and consumables, including air lines, pressure regulators, filters, oilers, etc. refer to ANSI B186.1 for additional maintenance information. If accessory or tool breakage occurs, investigate failure to determine the cause and correct before issuing tool for work. Use the following schedule as a starting point in developing a Preventative Maintenance Program. If tool does not operate properly (RPM, Vibration, Start/Stop) after these scheduled checks or at any time, the tool must be repaired and corrected before returning tool to use.

INSTALLATION

- To ensure long life and dependable service, use a Closed Loop Air System and Filter-Regulator-Lubricator as diagramed below.
- Each tool should have its own dedicated hose connected to an air supply manifold. Quick disconnects should be installed at the manifold in an effort to reduce contamination into the tool.
- It is strongly recommended that all Dynabrade rotary vane air tools be used with a Filter-Regulator-Lubricator to minimize the possibility of misuse due to unclean air, wet air or insufficient lubrication. Dynabrade recommends the following: **10681** Air Line Filter-Regulator-Lubricator — Provides accurate air pressure regulation, two-stage filtration of water contaminants and micro-mist lubrication of pneumatic components.
- Dynabrade recommends one drop of air lube per minute for each 20 SCFM (example: if the tool specification states 40 SCFM, set the drip rate on the filter-lubricator to 2 drops per minute) Dynabrade Air Lube (P/N **95842**: 1pt/473ml) is recommended.

MAINTENANCE SCHEDULE

Daily (every 8 hours):

- Inspect tool and accessories for damage or broken parts. Replace items as necessary to ensure proper operation and safety.
- Lubricate motor as recommended. Use Dynabrade Air Lube (P/N **95842**: 1pt/473ml) 10W/NR. (1 Drop per minute of air lube per 20 SCFM.)
- Check air line pressure with a gage. (MAX. 90 PSIG or 6.2 Bar operating pressure at the air inlet of the tool.)
- Right angled gear and wick system through gear case grease fitting with 3 plunges of gear oil (P/N **95848**) and grease gun (P/N **95541**). (Prime grease gun prior to greasing.)
- Check tool for proper operation: If operating improperly or demonstrates unusual vibration, the tool must be serviced and problem corrected before further use.

Every 20 Hours or Once a Week Which Ever Comes First:

- Check free speed of tool without the abrasive accessory mounted. Measure RPM (speed) with tachometer and with air pressure set at 90 PSIG while the tool is running. If a governed tool is operating at a higher speed than the RPM marked on the tool housing, the tool must be serviced and corrected before use. A non-governed tool may exceed the RPM marked on the tool by 10% when operated at free speed with no accessories.
- If tool is running fast look for worn, damaged or missing governors, air control rings and silencers. Special care must be taken when servicing

governors and speed control devices. Injection molded governor assemblies are non-serviceable and must be replaced.

- If tool is running slow look for clogged inlet screen, air stream, silencer(s) or a malfunctioning governor (see concerns for servicing governors). Service as required.

Every 50 Hours:

- Lubricate planetary gears through gear case grease fitting with 3 plunges of grease (P/N **95542**) and grease gun (P/N **95541**). (Prime grease gun prior to greasing.)

REPAIR

- Use only genuine Dynabrade replacement parts to ensure quality. To order replacement parts, specify Model#, Serial# and RPM of your air tool.
- Mineral spirits are recommended when cleaning the tool and parts. Do not clean tool or parts with any solvents or oils containing acids, esters, ketones, chlorinated hydrocarbons or nitro carbons.
- DO NOT clean or maintain tools with chemicals that have a low flash point (example: WD-40®).
- Motor Tune-Up Kit are available (when applicable) which includes high wear and medium wear motor parts.
- Air tool markings must be kept legible at all times, if not, reorder housing and replace. User is responsible for maintaining specification information.
- After maintenance is performed on tool, add a few drops of Dynabrade Air Lube (P/N **95842**) to the tool inlet and start the tool a few times to lubricate air motor. Verify RPM (per 20 hr maintenance schedule), vibration and operation.

HANDLING & STORAGE

- Use of tool rests, hangers and/or balancers is recommended.
- Protect tool inlet from debris (see Notice).
- DO NOT carry tool by air hose or near the tool throttle lever.
- Store accessories in protective racks or compartments to prevent damage.
- Follow the handling instructions outlined in the operating instructions when carrying the tool and when changing accessories.
- Protect accessories from exposure to water, solvents, high humidity, freezing temperature and extreme temperature changes.

END OF USE/DISPOSAL

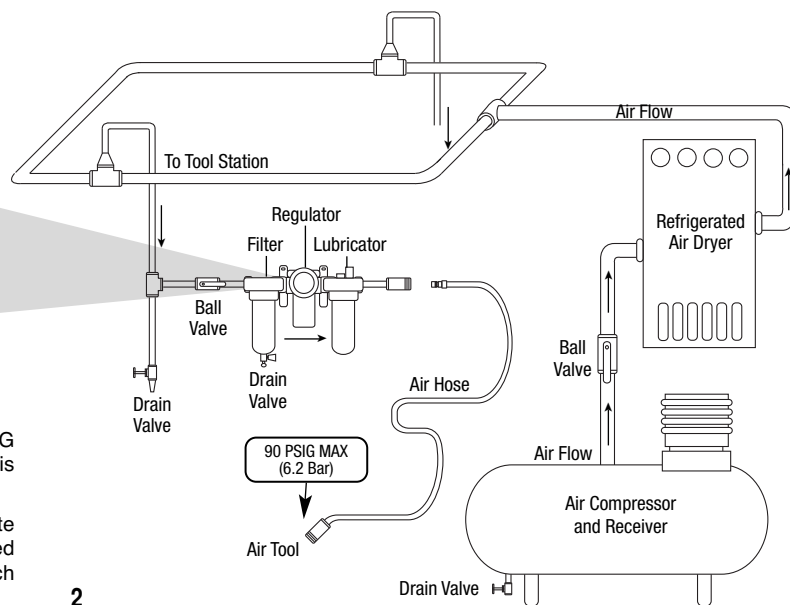
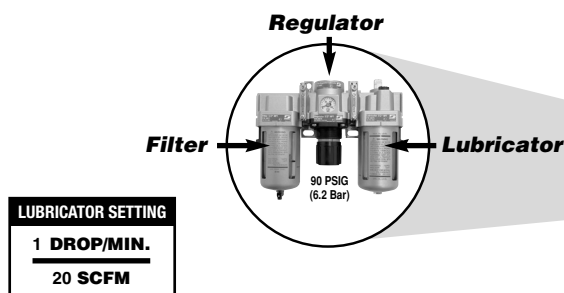
When tool has reached its end of useful service, disassemble tool into its primary components (i.e. steel, aluminum and plastic part) and recycle or discard per local, state and/or federal regulations as to not harm the environment.

NOTICE

All Dynabrade motors use the highest quality parts and metals available and are machined to exacting tolerances. The failure of quality pneumatic motors can most often be traced to an unclean air supply or the lack of lubrication. Air pressure easily forces dirt or water contained in the air supply into motor bearings causing early failure. It often scores the cylinder walls and the rotor blades resulting in limited efficiency and power. Our warranty obligation is contingent upon proper use of our tools and cannot apply to equipment which has been subjected to misuse such as unclean air, wet air or a lack of lubrication during the use of this tool.

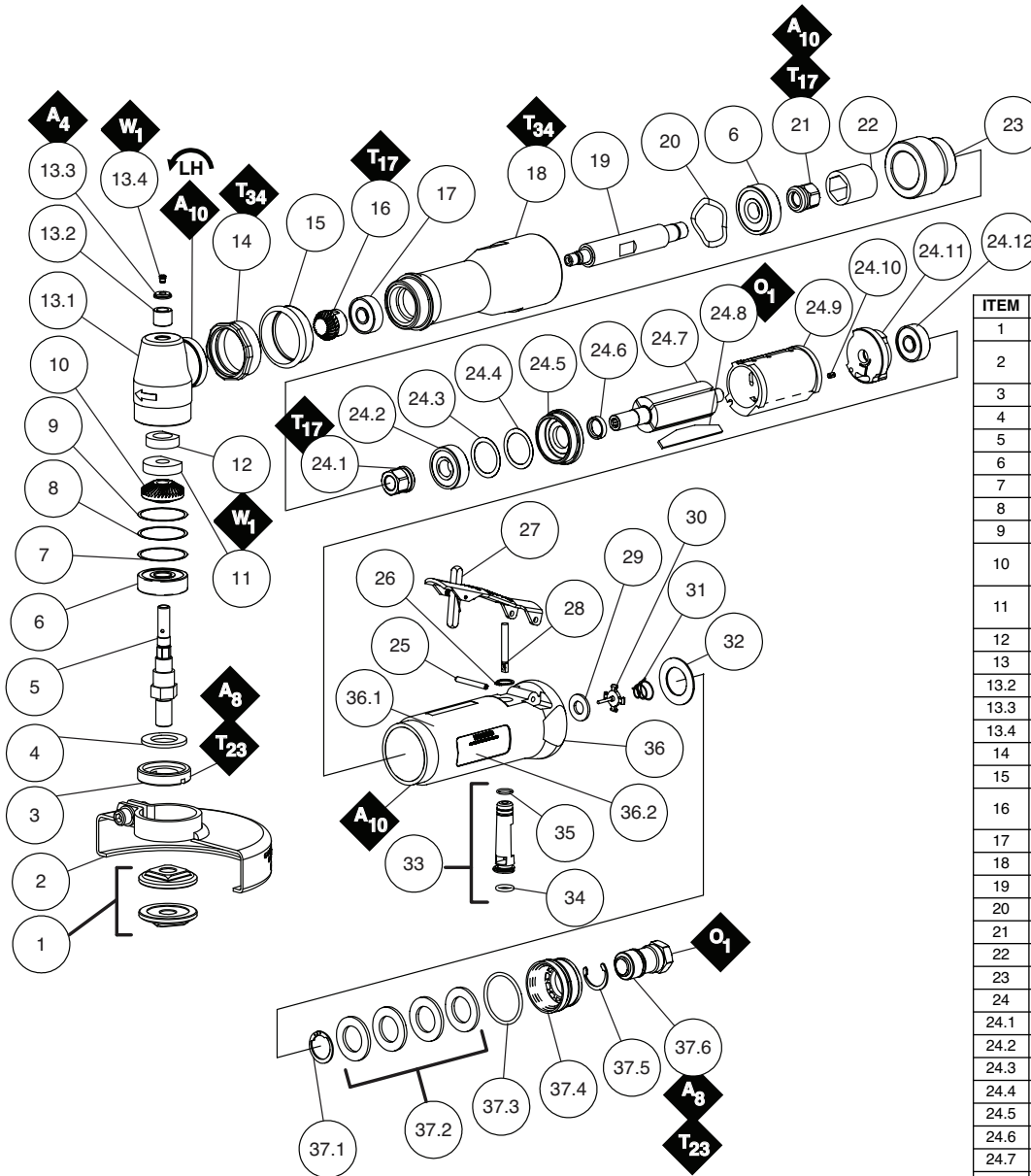
AIR SYSTEM

Closed Loop Pipe System, Sloped in Direction of Air Flow



- Dynabrade Air Power Tools are designed to operate at 90 PSIG (6.2 Bar) maximum air pressure at the tool inlet, when the tool is running. Use recommended regulator to control air pressure.
- Ideally the air supply should be free from moisture. To facilitate removing moisture from air supply, the installation of a refrigerated air dryer after the compressor and the use of drain valves at each tool station is recommended.

.7 hp Extension Cut-Off Wheel Tool Complete Assembly



ITEM	P/N	DESCRIPTION	QTY.
1	50269	FLANGE SET	1
2	53592 53593	3" GUARD ASSEMBLY - 54732 4" GUARD ASSEMBLY - 54736	1
3	02035	LOCK NUT	1
4	01486	FELT SILENCER	1
5	53565	SPINDLE	1
6	54520	BEARING	2
7	97116	SHIM - 0.025 THK	AR
8	97117	SHIM - 0.05 THK	AR
9	97118	SHIM - 0.127 THK	AR
10	02589 02599	GEAR - 54732 GEAR - 54736	1
11	02042 02044	WICK BOTTOM - 54732 WICK BOTTOM - 54736	1
12	02045	WICK TOP	1
13	02031	HOUSING ASSEMBLY	1
13.2	02033	BEARING	1
13.3	02041	GREASE PLATE	1
13.4	01041	FITTING	1
14	01461	LOCK RING	1
15	01547	COLLAR	1
16	02590 02600	PINION - 54732 PINION - 54736	1
17	02649	BEARING	1
18	53579	EXTENSION HOUSING	1
19	53564	EXTENSION SPINDLE	1
20	98505	WAVE WASHER	1
21	51969	COUPLING NUT	1
22	50902	COUPLER	1
23	53574	SPACER	1
24	01882	MOTOR ASSEMBLY	1
24.1	51969	COUPLING NUT	1
24.2	01007	BEARING	1
24.3	01293	SHIM - 0.025 THK	AR
24.4	01294	SHIM - 0.05 THK	AR
24.5	52924	FRONT BEARING PLATE	1
24.6	01010	SPACER	1
24.7	55021	ROTOR	1
24.8	01185	VANE (4/PKG)	1
24.9	01028	CYLINDER	1
24.10	50767	PIN	1
24.11	01721	REAR BEARING PLATE	1
24.12	02649	BEARING	1
25	01017	PIN	1
26	95558	RING	1
27	01089	SAFETY-LOCK THROTTLE LEVER	1
28	01477	VALVE STEM	1
29	01464	SEAL	1
30	01472	TIP VALVE	1
31	01468	SPRING	1
32	01564 01567	AIR CONTROL RING - 54732 AIR CONTROL RING - 54736	1
33	01247	SPEED REGULATOR	1
34	01024	O-RING	1
35	95730	O-RING	1
36	25352 25356	HOUSING ASSEMBLY - 54732 HOUSING ASSEMBLY - 54736	1
36.1	96119	SPECIFICATION LABEL	1
36.2	96120	WARNING LABEL	1
37	94535	MUFFLER ASSEMBLY	1
37.1	95711	SNAP RING	1
37.2	01486	FELT SILENCER	4
37.3	96065	O-RING	1
37.4	01446	AIR DEFLECTOR	1
37.5	95620	RETAINING RING	1
37.6	01578	ADAPTER ASSEMBLY	1
-	95262	14 MM WRENCH	1
-	95281	19 MM WRENCH	1

KEY

W Wick: W₁ = Gear Oil

O Oil: O₁ = Air Lube

A Adhesive: A₄ = Loctite #680
 A₈ = Loctite #567
 A₁₀ = Loctite #243

T Torque: N•m x 8.85 = lb•in.

T_x X = Torque Value (N•m)

Always follow adhesive manufacturers cleaning and priming recommendations.

LIFETIME WARRANTY

To validate Dynabrade Lifetime Warranty, you must register each tool at: www.dynabrade.com. Registration of each tool at website is required. Dynabrade will not honor Lifetime Warranty on unregistered tools. Please view the entire Lifetime Warranty Policy at : www.dynabrade.com.



MACHINE SPECIFICATIONS

Model	Speed	Power	Sound	Air Consumption	Wheel Size	Weight	Length	Height
54732	18,000 RPM	.7 hp (522 W)	82 db(A)	41 SCFM (1161 LPM)	3" Dia.	3.5 lb. (1.6 kg)	11.4" (289 mm)	3.1" (78 mm)
54736	13,500 RPM	.7 hp (522 W)	82 db(A)	40 SCFM (1133 LPM)	4" Dia.	3.7 lb. (1.7 kg)	11.4" (289 mm)	3.1" (78 mm)

Additional Specifications: Air Inlet Thread 1/4" NPT • Hose I.D. 3/8" (10 mm)

Sound Level is the pressure measurement according to the method outlined in ISO regulation ISO-15744

OPTIONAL ACCESSORIES



Motor Tune-Up Kit

- Includes assorted parts to help maintain and repair motor.

Part No. 96680



Over Hose Assembly

- Over Hose Assembly directs exhaust away from operator.

Part No. 94994



Dynabrade Air Lube

- Formulated for pneumatic equipment.
- Absorbs up to 10% of its weight in water.
- Prevents rust and formation of sludge.
- Keeps pneumatic tools operating longer with greater power and less down time.

95842: 1 pt. (473 ml)

95843: 1 gal. (3.8 L)



Dynabrade Angle Gear Oil

- Specifically formulated to saturate wick system in right angle gear head.

Part No. 95848: 2.5 oz. tube

Part No. 95541: Gear Oil Gun

REFERENCE CONTACT INFORMATION

1. **American National Standards Institute – ANSI**
1899 L Street, NW
11th Floor
Washington, DC 20036
Tel: 1 (212) 642-4900

2. **Government Printing Office – GPO**
Superintendent of Documents
Attn. New Orders
P.O. Box 371954
Pittsburgh, PA 15250-7954
Tel: 1 (202) 512-1803

3. **Power Tool Institute, Inc.**
P.O. Box 818
Yachata, Oregon 97498-0818
Tel: 1 (503) 547-3185

4. **European Committee for Standardization**
Rue de Stassart 36
B - 1050 Brussels, Belgium

DYNABRADE, INC.

www.dynabrade.com

8989 Sheridan Drive • Clarence, NY 14031-1419 • Phone: (716) 631-0100 • Fax: 716-631-2073 • International Fax: 716-631-2524
© DYNABRADE, INC., 2011 PRINTED IN USA PD11.17_07/11

