

Electric Drum Vacuum

High Volume Dust & Chip Collection Systems

PD22-12
October, 2022

Safety, Operation and Maintenance - Save This Document and Educate All Personnel

Model No.	Description	Powered By	Region Supply	Capacity
61200	General Purpose	120/60 Hz	US/CA 15 Amp	55 Gallon (208 Liters)
61201	For use with tools			

VACUUM

"M" CLASS DRY VACUUM

When employed in accordance with their intended use, the industrial vacuum cleaners described in these operating instructions are suitable for picking up non-flammable, dry dusts. They correspond to dust class "M" in accordance to: EN 60335-2-69. By SLG, Germany



Find The Most Current Offering of Support Documents and Accessories at www.Dynabrade.com

GENERAL AND TOOL SPECIFIC SECTIONS MUST BE READ AND UNDERSTOOD BEFORE OPERATING ANY PORTABLE ELECTRIC TOOL!

This document must be read and understood by operating personnel and safety manager. Protection to operating personnel, as well as adjacent areas, shall be maintained at all times. The user and/or the user's employer shall conduct a risk assessment of workplace hazards including exposure limits.

Always comply with: General Industry Safety & Health Regulations (www.osha.gov), International Organization for Standardization (www.iso.org) and Regional Regulations. EN Standards for Hand Held Non-Electric Power Tools (www.cen.eu), American National Standards Institute (www.ansi.org), Compressed Air and Gas Institute (www.cagi.org).

ADDITIONAL SAFETY REFERENCE MATERIALS ARE AVAILABLE AT WWW.DYNABRADE.COM

SAFETY SIGNAL WORDS

DANGER	Indicates a hazardous situation that, if not avoided, will result in death or serious injury. This signal word is to be limited to the most extreme situations.
WARNING	Indicates a hazardous situation that, if not avoided, could result in death or serious injury.
CAUTION	Indicates a hazardous situation that, if not avoided, could result in minor or moderate injury. It may also be used without the safety alert symbol as an alternative to "NOTICE."
NOTICE	Is the preferred signal word to address practices not related to personal injury. The safety alert symbol shall not be used with this signal word. As an alternative to "NOTICE", the word "CAUTION" without the safety alert symbol may be used to indicate a message not related to personal injury.

SAFETY SYMBOLS

Dynabrade Inc. safety labels/symbols follow the guidelines outlined in ISO 3864. In order to help users understand the meaning of the safety labels/symbols, the standard allows the reproducing of the figures and captions below. Some colored symbols are reproduced in this document in grayscale. A complete color version may be found at www.dynabrade.com.

Geometric surround shapes:

Warning - A black graphical symbol inside a yellow triangle with a black triangular band defines a safety sign that indicates a hazard.	Prohibition - A black graphical symbol inside a red circular band with a red diagonal bar defines a safety sign that indicates that an action shall not be taken or shall be stopped.	Mandatory Action - A white graphical symbol inside a blue circle defines a safety sign that indicates that an action shall be taken to avoid a hazard.
---	---	--

For consistency Dynabrade Inc. also uses the above symbols and word definitions in collateral material, which includes this Electric Tool Safety Guidelines. For product safety information in Product Manuals, Instructions, and other Collateral Materials, Dynabrade Inc. adheres to ANSI Z535.6-2006.

	Refer to instruction manual/booklet		Hearing protection must be worn		Vibration hazard		Air hose hazard
	Eye protection must be worn		Respiratory protection must be worn		Fire hazard		Entanglement hazard
	Electric shock hazard		Safety Alert		Explosion hazard		Crush hazard

IMPORTANT SAFETY INSTRUCTIONS

When using an electrical appliance, basic precautions should always be followed, including the following:

READ ALL INSTRUCTIONS BEFORE USING

WARNING

- To reduce the risk of fire, electric shock, or injury:

- 1 - Do not use outdoors or on wet surfaces
- 2 - Do not leave appliance when plugged in. Unplug from outlet when not in use and before servicing.
- 3 - Do not expose to rain. Store indoors.
- 4 - Do not allow to be used as a toy. Close attention in necessary when used by or near children.
- 5 - Use only as described in this manual. Use only manufacturer's recommended attachments.
Do not use with damaged cord or plug. If appliance is not working as it should, has been dropped, damaged, left outdoors, or
- 6 - dropped into water, return it to a service centre.
Do not pull or carry by cord, use cord as a handle, close a door an cord, or pull cord around sharp edges or corners. Do not run
- 7 - appliance over cord. Keep cord away from heated surfaces.
- 8 - Do not unplug by pulling on cord. To unplug, grasp the plug, not the cord.
- 9 - Do not handle plug or appliance with wet hands.
Do not put any objet into openings. Do not use with any opening blocked; keep free of dust, lint, hair and anything that may reduce
- 10 - air flow.
- 11 - Keep hair, loose clothing, fingers and all parts of body away from openings an moving parts.
- 12 - Do not pick up anything that is burning or smoking, such as cigarettes, matches or hot ashes.
- 13 - Do not use without dust bag and/or filters in place.
- 14 - Turn off all controls before unplugging.
- 15 - Use extra care when cleaning on stairs.
- 16 - Do not use to pick up flammable or combustible liquids such as gasoline or use in areas where they may be present.
- 17 - "Connect to a properly grounded outlet only. See Grounding Instructions".
- 18 - Use only original spare parts.

After finishing work:

- 1 - Switch off the cleaner and unplug the power cord
- 2 - Wind up the mains lead
- 3 - Empty dirt tank
- 4 - Clean the vacuum cleaner inside and outside by suction and wiping
- 5 - Store the machine indoors in clean, dry place
- 6 - This appliance is provided with an automatically reset thermal limiter to avoid damage to the motor.

SAVE THESE INSTRUCTIONS

INSTRUCTIONS TO BE STRICTLY FOLLOWED

- Components used in packaging (i.e. plastic bags) can be dangerous: keep away from children and animals.
- ATTENTION: this machine can only be used to suction dry substances and cannot be utilized outdoor with rainy weather .
- The use of this machine for anything not specified in this manual may be dangerous and must be avoided.
- The suction nozzle should be kept away from the body, especially from delicate areas such as eyes, ears and mouth.
- The equipment should be correctly assembled before use.
- Ensure that power socket used is correct for the machine plug.
- Check the voltage indicated on the rating plate is the same as the supply voltage.
- WARNING: these machines are not designed for picking up health endangering dusts (i.e. fireplace ash) or inflammable/explosive substances.
- Never leave the equipment unattended while in use.
- Never use this equipment to pick up any kind of liquids.
- Always remove the plug from the socket before carrying out any operation with the machine or whenever the machine remains unattended or can be handled by children or people not conscious of their actions.
- The main supply cable should not be used to pull or lift the machine.
- Never immerse the machine in water for cleaning nor use pressure water jets to wash it.
- Should the line cable be damaged, this must be either replaced by the manufacturer or by its service centre or in any case by a person having similar skills, so as to prevent any risk.
- If you use extension cables make sure they are placed on dry surfaces and protected from eventual water jets.
- This equipment should not be used to pick up water from containers, sinks, tubs, etc.
- Service and repairs must be carried out by qualified personnel only. Replacement parts for the machine must be original spare parts only.
- The manufacturer cannot be held responsible for any damage/injury caused to persons or property, because of the incorrect use of the machine due to procedures being used which are not specified in this instruction manual.

⚠ WARNING



Read and understand tool manual before work starts to reduce risk of injury to operator, visitors, and tool.



Ear protection to be worn when exposure to sound, exceeds the limits of applicable Federal, State or local statutes, ordinances and/or regulations.



Respiratory protection to be used when exposed to contaminants that exceed the applicable threshold limit values required by law.



Eye protection must be worn at all times, eye protection to conform to ANSI Z87.1.



Practice safety requirements. Work alert, have proper attire, and do not operate tools under the influence of alcohol or drugs.



Electric shock hazard. Avoid bodily contact with grounded objects, bodies of water. Do not damage cord set.

Read and understand this tool manual before operating your tool. Follow all safety rules for the protection of operating personnel as well as adjacent areas. For safety information, refer to Code of Federal Regulation –CFR 29 Part 1910, NFPA 79, NFPA 70, NFPA 652, IEC, ISO 12100, ISO 14121-2 TR, EN 50281, EN 50495, EN 14986, EN 15188, EN 16009 –Safety Requirements and applicable State and Local Regulations.

Some dust created by sanding, grinding, drilling, and other construction activities contain chemicals known to cause cancer, birth defects or other reproductive harm. Some examples of these chemicals are:

- Lead from lead-based paints
- Crystalline silica from bricks and cement and other masonry products
- Arsenic and chromium from chemically treated lumber

Your risk from these exposures varies, depending on how often you do this type of work. To reduce your exposure to these chemicals: work in a well ventilated area, and work with approved safety equipment, such as those dust masks that are specially designed to filter out microscopic particles.



- Do not use for explosive metallic dust (Aluminum, Magnesium, etc.)
- Never use to exhaust chemical vapors.
- Not to be used for the collection of hot embers / dust particles.

Tool Intent:

The intended use of portable complete vacuum head assembly kit to be used with 55 (208 Liters) Gallon drums for the safe collecting of dust/chips captured through the process of sanding with hand tools/General purpose of non-metallic materials such as wood, fiberglass, composites, and solid surface etc.

GENERAL POWER EQUIPMENT SAFETY WARNINGS

Read all safety warnings and all instructions. Failure to follow the warnings and instructions may result in electric shock, fire and/or serious injury. **SAVE ALL WARNINGS AND INSTRUCTIONS FOR FUTURE REFERENCE** The term “equipment” in the warnings refers to your (corded) vacuum system. Do not modify Dynabrade products, they must be used as intended. Modifying equipment may create hazardous situations.

GROUNDING INSTRUCTIONS

This unit must be grounded. If the unit should malfunction or break down, grounding provides a path of least resistance for electric current to reduce the risk of electric shock.

Where it is critical to avoid shocks or sparks caused by static electricity, an electrically conductive and grounded air supply hose must be used.



WARNING

Grounding by means of a ground wire between both ends of the air supply tubing passing through vacuum hose is recommended.

ASSEMBLY AND INSTALL

⚠ WARNING

- Visually inspect plugs and cords for frays, visible damage, and signs of deterioration or deformation.
- Plug equipment into proper outlet based on model/voltage. Always use a grounded power supply.
- Ensure that a clean dry drum is being used in conjunction with DrumVac kit.

⚠ CAUTION

- When unloading equipment from box, all other operators are to remain clear of work-cell.
- Use proper/safe methods when transporting equipment. Improper pushing and pulling methods will increase operator strain.
- When transporting equipment from work-cell to work-cell, do not pull in operator direction.
- Slowly remove vacuum head from packaging and stage on flat surface before assembly.
- Slowly remove interface ring from packaging and install on top of 55 (208 Liters) Gallon Drum.
- With power source disconnected from system, apply the vacuum head to the top of the interface ring and lock in place.
- Be sure to properly lock down vacuum head to interface ring with provided latches on each side.
- Be sure to keep fingers and hands clear from pinch points upon re-assembly.
- Ensure to install DrumVac kit together with proper 55 (208 Liters) Gallon 33” High x 22 1/2” Dia Cylindrical ASTM grade 1.1mm wall thickness, Carbon Steel Open Head Drum. UN-Solid Rating: 1A2/X400/S

OPERATION

⚠ WARNING

- Do not use the equipment or touch any electrically conductive surfaces if switch does not function correctly. Unplug vacuum and seek qualified electrical personnel.
- Store idle equipment out of the reach of children and do not allow persons unfamiliar with the equipment or these instructions to operate the equipment.
- Use the equipment, accessories, etc. in accordance with these instructions, taking into account the working conditions and the work to be performed.
- Regularly clean the equipment's air vents. The motor's fan will draw the dust inside the housing and excessive accumulation of dust may cause electrical hazards.
- Do not operate equipment with vacuum head removed from DrumVac assembly.
- Do not operate equipment in explosive environments, such as in the presence of flammable liquids, gases, and or combustible dusts based on NFPA standards.
- Avoid body contact with earthed or grounded surfaces such as pipes and radiators. Ensure you are plugging your system to a grounded plug.
- Do not expose equipment to rain or wet conditions. Water entering equipment will increase the risk of electric shock. Product nameplate depicts dry use only.
- Plug equipment into proper outlet based on model/voltage. Always use a grounded power supply. There is an increased risk of electrical shock with an ungrounded power supply. If a power extension cord is used, ensure it is rated for associated model and power requirements.

⚠ CAUTION

- Do not use the equipment as a means of transportation.
- Do not transport equipment across uneven or inclined surfaces.
- Do not abuse the cord. Never use the cord for carrying, pulling or unplugging the equipment. Keep cord away from heat, oil, sharp edges or moving parts.
- Stay alert, watch what you are doing and use common sense when operating equipment. Do not use equipment while you are tired or under the influence of drugs, alcohol or medication.
- Use personal protective equipment. Always wear eye protection. Protective equipment such as dust masks, non-skid safety shoes, hard hat, or hearing protection used for appropriate conditions will reduce personal injury.
- Dress properly. Do not wear loose clothing or jewelry. Keep your hair, clothing, and gloves away from moving parts. Loose clothes, jewelry or long hair can be caught in moving parts.
- Do not use the airline for anything other than what it is intended for. Never use the airline for carrying, pulling or unplugging the equipment. Keep airline away from heat, oil, sharp edges or moving parts.
- Do not use the DrumVac kit unless fully assembled as intended with drum. Ensure all vacuum connections have been made before turning unit to on position.
- Ensure DbA level while using DrumVac does not exceed acceptable levels per operators shift, based on governing body guidelines.
- The vacuum system will operate by an on/auto/manual switch located on the front of the Motorhead/Vacuum Head Assembly. This switch must be turned on to activate the Motorhead.

MAINTENANCE INSTRUCTIONS

⚠ WARNING

- Do not provide maintenance on equipment in explosive environments, such as in the presence of flammable liquids, gases, and or combustible dusts based on NFPA standards.
- Use the proper equipment to handle and dump the 55 (208 Liters) Gallon drum when full of collected debris. Keep all surrounding areas free of additional operators when transport and dumping of drum takes place.

⚠ CAUTION

- Use only genuine Dynabrade replacement parts to ensure quality.
To order replacement parts, specify Model # and Serial # of your equipment.
- Have your equipment serviced by a qualified repair person using only identical replacement parts.
- Unplug vacuum head power cord before providing all maintenance.
- Important: A preventative maintenance program is recommended whenever dust collection equipment is used.
Ensure vacuum head is placed on a flat/sturdy surface before performing maintenance.

EQUIPMENT USE AND CARE

- Prevent unintentional starting. Ensure the switch is in the off-position before connecting to power source.
- Do not overreach. Keep proper footing and balance at all times. This enables better control of the equipment in unexpected situations.
- Do not let familiarity gained from frequent use of equipment allow you to become complacent and ignore tool safety principles.
A careless action can cause severe injury within a fraction of a second.

TROUBLESHOOTING

Decrease in Vacuum Performance

- Make sure the vacuum head power cord is undamaged and plugged into correct power supply. (If machine still does not start, contact a certified electrician for review and repair).
- Disconnect power supply of DrumVac and check condition of HEPA filter and ensure all vacuum hoses and inlets are free of debris. If damaged, replace with Dynabrade parts.
- Clean the filter thoroughly and as often as necessary. The filter used inside is water-resistant and washable. To prevent damage, do not use high pressure or solvent to wash the filter.
- If the filter (P/N 80459) should become damaged or badly clogged and cannot be cleaned, replaced with a new one.
- This vacuum is equipped with an Electronic Thermal Protection Device. If the vacuum stops and the red indicator light appears ON, the unit has shut down as a result of increased temperature. Once the unit has regained a temperature that is allowable for operation the vacuum will resume operation.

GROUNDING INSTRUCTIONS

This appliance must be grounded. If it should malfunction or break down, grounding provides a path of least resistance for electric current to reduce the risk of electric shock.

This appliance is equipped with a cord having an equipment-grounding conductor and grounding plug.

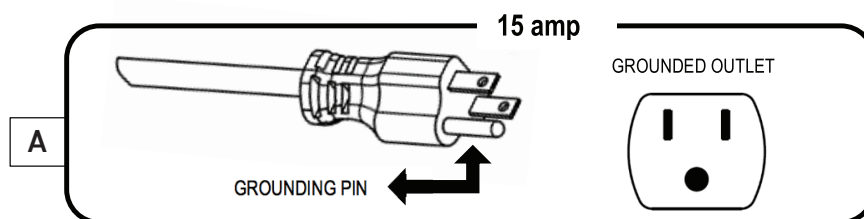
The plug must be inserted into an appropriate outlet that is properly installed and grounded in accordance with all local codes and ordinances.

WARNING - Improper connection of the equipment-grounding conductor can result in a risk of electric shock. Check with a qualified electrician or service person if you are in doubt as to whether the outlet is properly grounded.

Do not modify the plug provided with the appliance - if it will not fit the outlet, have a proper outlet installed by a qualified electrician.

Make sure that the appliance is connected to an outlet having the same configuration as the plug. No adaptor should be used with this appliance.

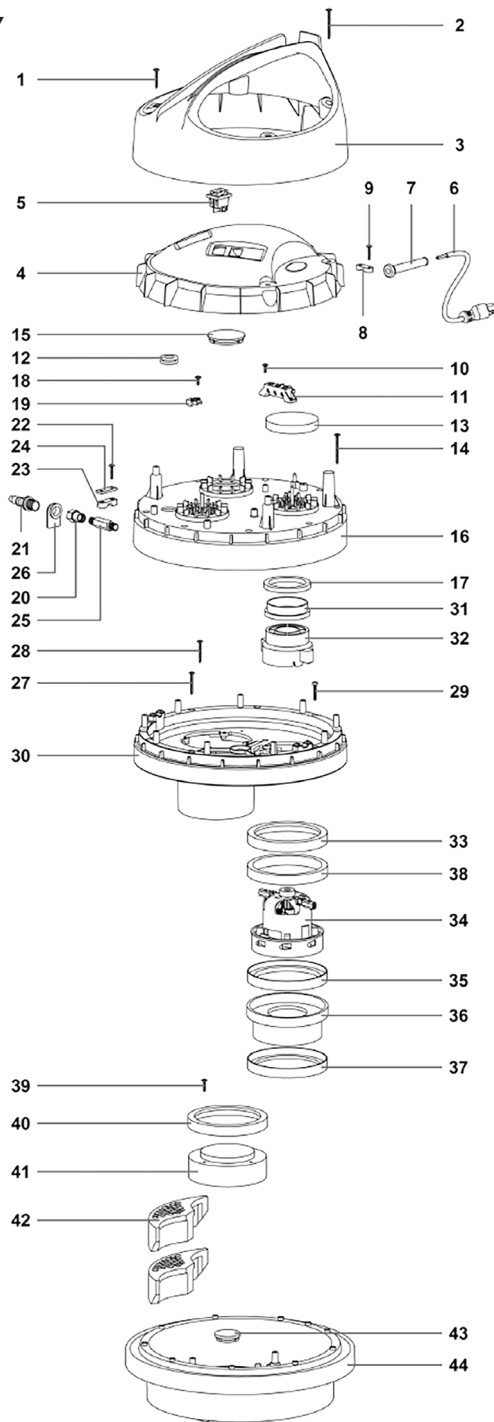
This appliance is for use on a nominal 120-Volt circuit and a grounding attachment plug that looks like the plug illustrated in sketch (A)



FOR COMMERCIAL USE
DRY VACUUM CLEANERS
INDOOR USE ONLY

Vacuum Head Assembly

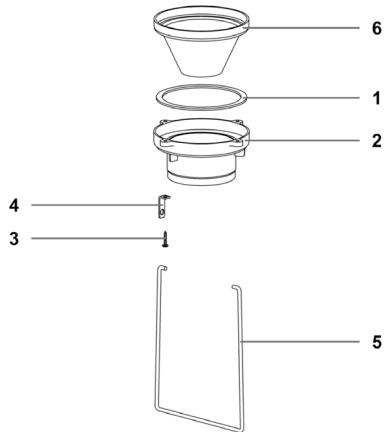
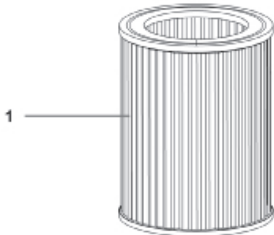
Model No.	Head Replacement
61200	63600



ITEM	DESCRIPTION	P/N	QTY
1	SCREW	32149	2
2	SCREW	32150	2
3	HANDLE	32151	1
4	LAYER 2	32152	1
5	RED LIGHT	32153	1
6	ELECTRIC CORD	32154	1
7	STRAIN RELIEF	32155	1
8	CABLE CLAMP	32156	1
9	SCREW	32157	1
10	SCREW	32158	2
11	CLAMP	32159	1
12	STRAIN RELIEF	32160	1
13	FILTER	32161	1
14	SCREW	32162	9
15	CAP COVER	32163	1
16	LAYER 3	32164	1
17	WASHER	32165	1
18	SCREW	32166	1
19	CLAMP	32167	1
20	CONNECTOR	32168	1
21	JOINT	32169	1
22	SCREW	32170	2
23	BLOCK	32171	1
24	BRACKET	32172	1
25	NIPPLE	32173	1
26	GASKET	32174	1
27	SCREW	32175	9
28	SCREW	32176	3
29	SCREW	32177	1
30	LAYER 4	32178	1
31	RING	32179	1
32	CAP/ADAPTER	32180	1
33	GASKET	32181	1
34	MOTOR	32182	1
35	GASKET	32183	1
36	ROUND BRACKET	32184	1
37	GASKET	32185	1
38	RING MUFFLER	32186	1
39	SCREW	32187	4
40	GASKET	32188	1
41	INSERT	32189	1
42	MUFFLER	32190	6
43	CAP	32191	2
44	BASE	32192	1

Filter

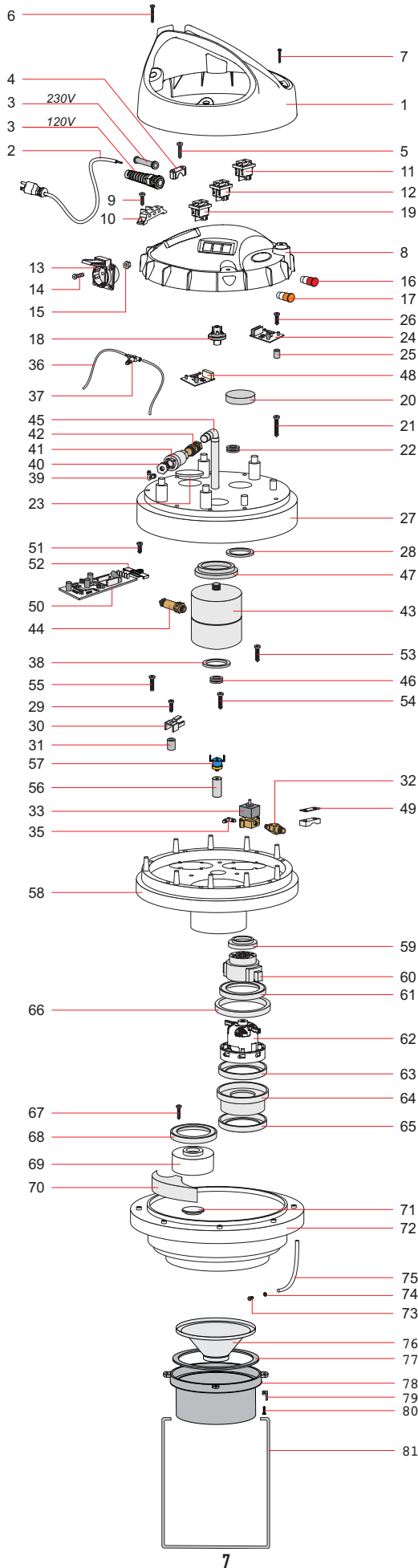
ITEM	DESCRIPTION	P/N	QTY
1	HEPA FILTER	80459	1



ITEM	DESCRIPTION	P/N	QTY
1	GASKET	32193	1
2	SUPPORT	32194	1
3	SCREW	32195	4
4	BRACKET FILTER	32196	2
5	LOCK FILTER	32197	1
6	DIFFUSER	32198	1

Vacuum Head Assembly

Model No.	Head Replacement
61201	63605

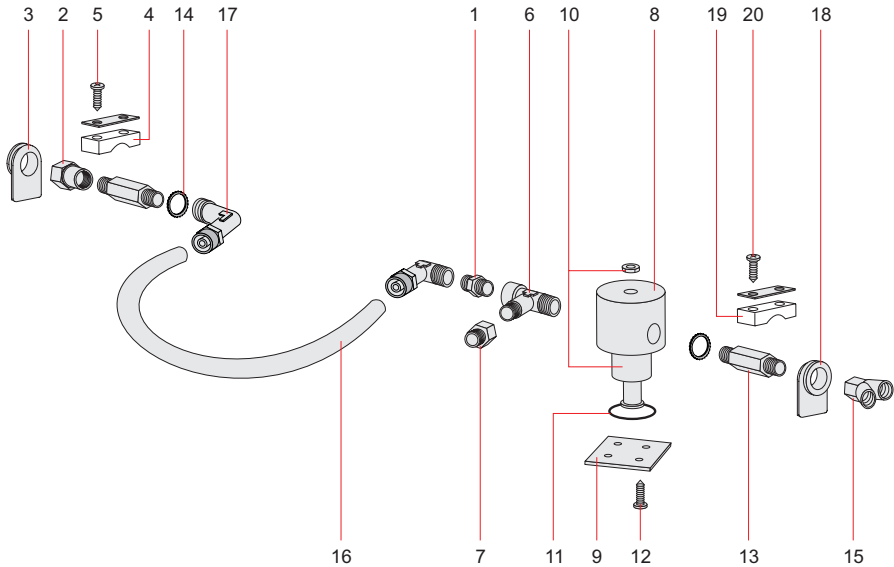


ITEM	DESCRIPTION	P/N
1	Handle	80460
2	Cord, Model 61401	80440
3	Cord, Model 61401	80482
4	Cord, Model 61401	80480
5	Cord, Model 61401	80485
6	Cord, Model 61401	80481
7	Cord, Model 61401	80230
8	Strain Relief - 120 V	80495
9	Strain Relief - 230 V	80486
10	Clamp - 120 V	N/A
11	Clamp - 230 V	80258
12	Screw	80235
13	Screw	80414
14	Screw	80232
15	Cover, Top	80461
16	Screw	80402
17	Terminal Board - 120 V	80415
18	Terminal Board - 230 V	80487
19	Switch On/Off	80475
20	Switch Tool Select	80450
21	Socket, Model 61401	80488
22	Socket, Model 61421	N/A
23	Socket, Model 61403	80492
24	Socket, Model 61409	80493
25	Socket, Model 61413	80494
26	Socket, Model 61415	N/A
27	Screw	80423
28	Nut	80406
29	Lamp, Red	80477
30	Lamp, Orange	80451
31	Pressure Sensor	80425
32	Switch Pocket Cover	80428
33	Filter Bracket	80419
34	Screw	80414
35	Guide	80405
36	Cover Cap	80284
37	Electric Card - 2 Speed - 120 V	80468
38	Electric Card - 2 Speed - 230 V	80489
39	Sleeve	80472
40	Screw	80232
41	Cover, Bottom	80467
42	Washer	80420
43	Screw	80418
44	Clamp	80173
45	Sleeve	80472
46	Check Valve	80446
47	Electrovalve - 120 V	80458
48	Electrovalve - 230 V	80490
49	Connector	80449
50	Elbow	80447
51	Tube (per Meter)	80401
52	Pressure Reducer	80439
53	Washer	80420
54	Elbow	80447
55	Reducer	80434
56	Valve	80436
57	Connector	80435
58	Air Tank	80432
59	Safety Valve	80437
60	Tube	80438
61	Guide	80405
62	Gasket	80448
63	Electronic Card	80445
64	Bracket	80245
65	Electronic Card	80430
66	Screw	80235
67	Bracket	80172
68	Screw	80255
69	Screw	80255
70	Screw	80413
71	Heat Sensor	80452
72	Thermoregulator	80422
73	Motor Mount	80478
74	Ring	80470
75	Cap	80442
76	Gasket	80290
77	Motor - 120 V	80462
78	Motor - 230 V	80491
79	Gasket	80426
80	Spacer	80443
81	Gasket	80290
82	Filter	80441
83	Screw	80235
84	Gasket	80290
85	Plug	80471
86	Muffler	80416
87	Cap	80417
88	Base	80469
89	Nipple	80298
90	Washer	80170
91	Tube	80171

ITEM	DESCRIPTION	P/N
76	DIFFUSER	80444
77	GASKET	80234
78	CARTRIDGE SUPPORT	80479
79	FILTER SUPPORT	80457
80	SCREW	80243
81	LOCKING STAFF	80431

Tool Supply Line **Complete Assembly**


ITEM	DESCRIPTION	P/N
1	Nipple	80429
2	Fitting	80229
3	Guide	80421
4	Bracket	80231
5	Screw	80225
6	T Connector	80433
7	Nipple	80400
8	Sensor Body	80476
9	Sensor Plate	80227
10	Sensor	80241
11	O-Ring	80226
12	Screw	80228
13	Nipple	80220
14	Washer	80221
15	Y Connector	96571
16	Tube (per Meter)	80453
17	Coupling	80222
18	Guide	80421
19	Bracket	80231
20	Screw	80225



Vacuum Head, Filter, Interface Ring and Inlet Kit

*Drum and Wheeled Base Sold Separately

ITEM	DESCRIPTION	P/N
1	VACUUM HEAD	63600
2	HEPA FILTER	80459
3	INTERFACE RING	62347
4	SINGLE INLET	32012

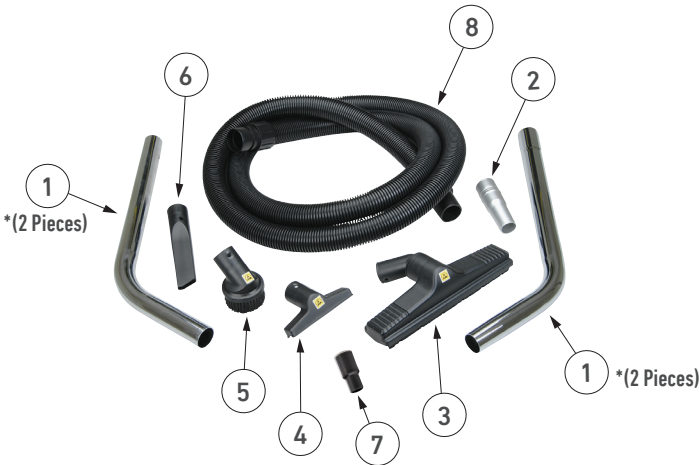


ITEM	DESCRIPTION	P/N
1	VACUUM HEAD	63605
2	HEPA FILTER	80459
3	INTERFACE RING	62347
4	Y INLET	32011



96746 General Purpose Cleaning Kit

*For use with DrumVac Kit 61200

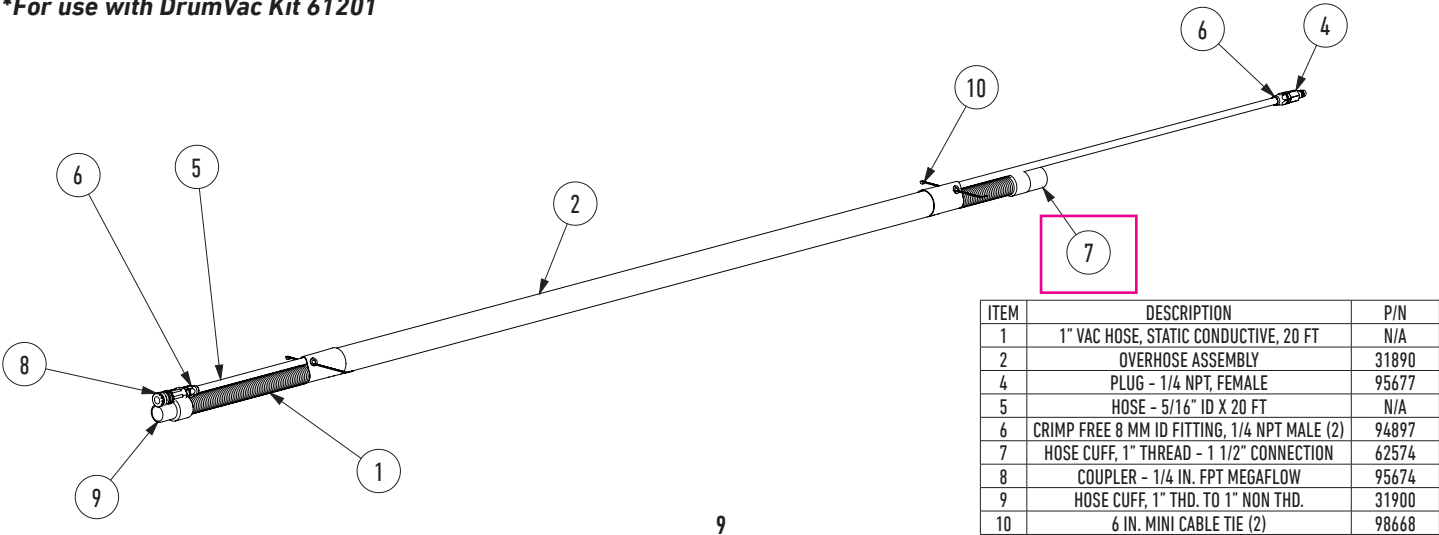


ITEM	DESCRIPTION	P/N
1	WAND	62341
2	REDUCER/TAPERED	62343
3	LARGE UTILITY FLOOR TOOL	62342
4	SMALL UTILITY FLOOR TOOL	62822
5	ROUND BRUSH	62727
6	CREVICE TOOL	62821
7	CUFF	31999
8	1-1/2" VACUUM HOSE	62340

Coaxial Vacuum Hose Assembly

(QTY 2) – Part no. 32005 1-1/4" Dia. x 20' (32 mm x 6m)

*For use with DrumVac Kit 61201



ITEM	DESCRIPTION	P/N
1	1" VAC HOSE, STATIC CONDUCTIVE, 20 FT	N/A
2	OVERHOSE ASSEMBLY	31890
4	PLUG - 1/4 NPT, FEMALE	95677
5	HOSE - 5/16" ID X 20 FT	N/A
6	CRIMP FREE 8 MM ID FITTING, 1/4 NPT MALE (2)	94897
7	HOSE CUFF, 1" THREAD - 1 1/2" CONNECTION	62574
8	COUPLER - 1/4 IN. FPT MEGAFLW	95674
9	HOSE CUFF, 1" THD. TO 1" NON THD.	31900
10	6 IN. MINI CABLE TIE (2)	98668

COMPONENTS AND FEATURES

Description of Electric Controls

(B) BLACK ELECTRIC SWITCH (I O II)

(select different working modes)

MODE "0": machine is off

MODE "I": the motors are working with cyclic cleaning of the cartridge filter

MODE "II": Electric control system is in automatic mode and the cleaning of the cartridge filter are working.

When the tool is switched off, after about 4 seconds the vacuum cleaner motor will switch off.

WARNING

- *The manufacturer is not responsible for damages to people or things due to an incorrect or negligent use of the ELECTRIC auto on/off device.*
- *Changes in the electrical connection of the vacuum head could cause serious damages, even the death of the operator, and irreparable damages to the vacuum head.*

WHITE SLIDE SWITCH (I II) (optional)

POSITION "I": low speed

1 user – 1 flexible hose

POSITION "II": high speed

2 users – 2 flexible hoses

ORANGE INDICATOR LIGHT

Connected to a pressure switch, when it lights means that the cartridge filter (essential filter) is clogged and it must be replaced.

RED INDICATOR LIGHT

It turns on when the thermal protection that stops the motor is activated. The thermal protection works when the temperature of the air coming out from the motor is about 85°C. The motor overheating is due to an obstructed filter cartridge.

TECHNICAL SPECIFICATIONS — PORTABLE VACUUM SYSTEMS

Model No.	Description	Powered By	Noise Level dB(A)	Air Pressure PSIG	Filter H.E.P.A.	Region Supply	Unit Capacity Size	Supporting Accessories	Operators	Cord Set
61200	General Purpose	120/60 Hz	75	80 - 150 (5.6 - 10.4 kg/cm ²)	0.3 micron	US/CA 15 Amp	55 Gallon (208 Liter)	96746	Single	27' (8M)
61201	For use with tools							32005	Dual	

Additional Specifications: Suggested Air Supply Line to all DrumVac Kits should be: 1/2" (13mm) minimum.

REPLACEMENT PARTS

HEPA Filter



80459

Filter Lock



80431

Y Inlet



32011

Single Inlet Fitting



32012

Interface Ring



62347

ACCESSORIES

55 Gallon Drum



32016

Vac Hose



32005

General Purpose Cleaning Kit



96746

Wheeled Base



32010



"M" CLASS DRY VACUUM

DYNABRADE, INC.

www.dynabrade.com

8989 Sheridan Drive • Clarence, NY 14031-1419 • Phone: (716) 631-0100 • Fax: 716-631-2073 • International Fax: 716-631-2524
©DYNABRADE, INC., 2022

