

# Dynabrade Downdraft Sanding Table

**Keep Workplace Area Free of Contaminants While Sanding**



## Operating Manual

### Congratulations on the purchase of your new Dynabrade Downdraft Sanding Table!

Your sanding table should give you many years of service with just a few minutes of maintenance on a regular basis. The simple and robust design of this machine is a unique feature which will allow a minimum of maintenance to keep it in excellent running condition. The motor(s) in your table have sealed bearings and do not need grease. The blowers are direct drive units which have no belts to wear out. The blower inlet cones are made from aluminum or fiberglass to prevent sparking, should the cone drag the blowers (very unlikely in normal use). As you can see, a lot of consideration has gone into the manufacture of your new sanding table to insure that you have years of trouble-free service. Your table has been designed with excess filter area (up to 70% more than some competitive units) in order to give better performance and require cleaning less frequently.



### Features

- Dual filtration – pre-filter and MERV 8 paper filters.
- High quality reverse incline blowers.
- Non-slip surface for easier tool maneuverability.
- Up to 70% more filter area than competitive brands.
- Ideal for use with Dynabrade random orbital sanders.
- Optional castors are available. 64995 (2) & 64996 (2)
- Base unit is all-metal construction with CNC milled 3/4" MDF table-top.
- Heavy-duty TEFC electric motors.
- Great for cabinet shops, solid surface fabricators and fiberglass applications.
- Keep machine on even when not in use – table actually filters air to help clean the shop environment.

### MODEL 64654

**48" wide x 96" long working area.**

- Includes eight 20" x 25" paper filters (64658) and four 16" x 25" paper filters (64659).
- Includes one pre-filter (64987)

### Specifications:

**Power Source** ..... (2) Heavy Duty TEFC Electric Motors, 1.5 Hp

**Vacuum Suction** ..... 6,000 CFM

**Electrical Capacity** ..... 460 volt (three phase)

208 volt (3 phase), 230 volt (single phase), 230 volt (3 phase), 460 volt (3 phase) available upon request. Contact Dynabrade customer service for information.

**Shipping Weight**..... 64654: 1050 lbs.

**Two Paper Filter Sizes Available: Model 64658** – 20" wide x 25" long Standard Paper Air Filter.

**Model 64659** – 16" wide x 25" long Standard Paper Air Filter.

### **IMPORTANT NOTICE**

**Do not use this table to sand or grind materials that may create sparks.  
Do not use for explosive metallic dust (Aluminum, Magnesium, etc.)**

## **Machine Operation And Useful Tips:**

Downdraft tables are designed to filter out the fine dust generated while performing various jobs such as sanding with an orbital sander. There is no machine to our knowledge that is 100% effective, but with a few simple pointers, you can enjoy a cleaner and much healthier work area. We have listed below some useful tips to help you get the best results from your new machine.

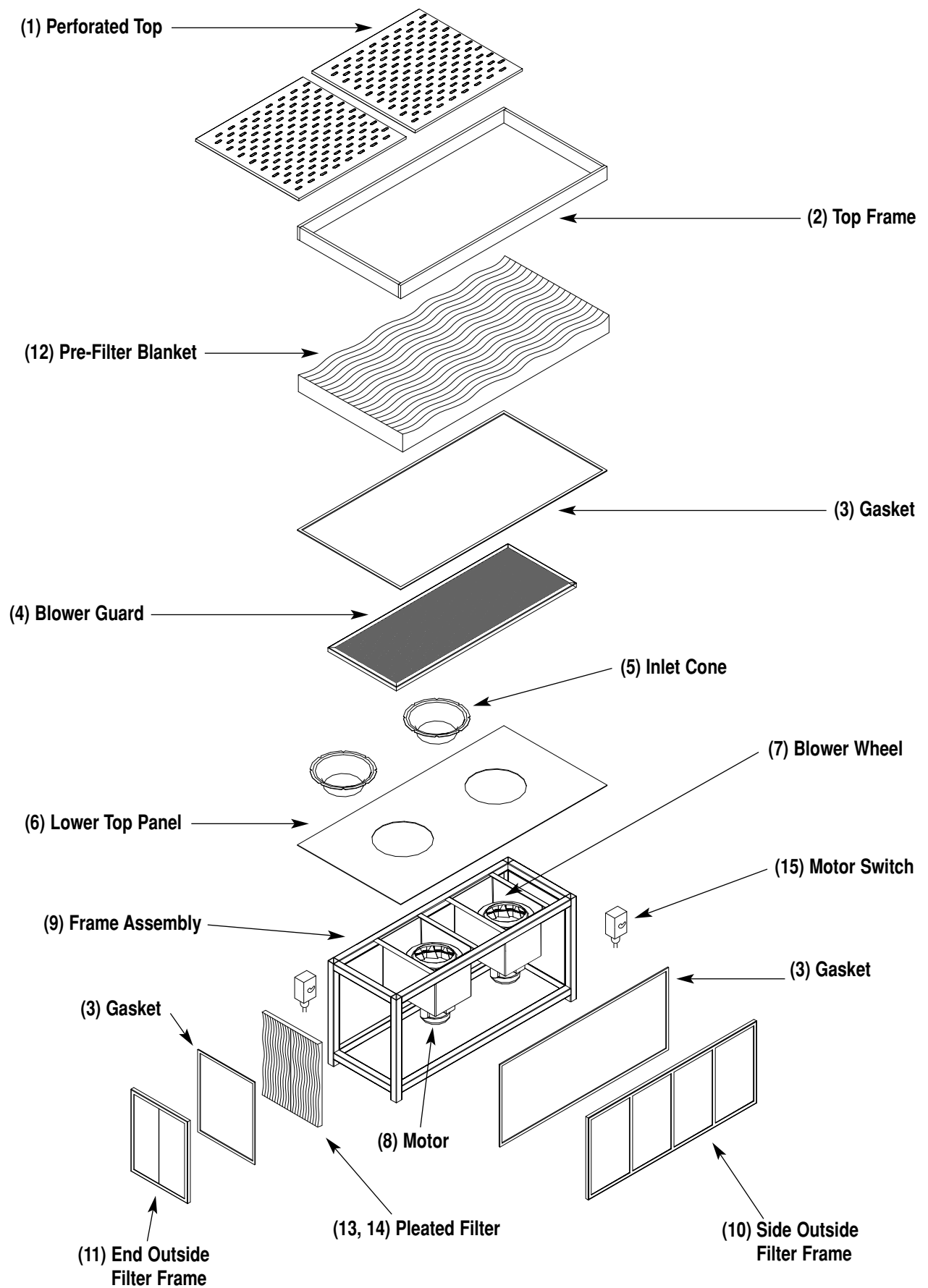
- A.** Clean filters as needed to keep the machine performing at it's highest level. Cleaning may be done by vacuuming the filters or by shaking out the dust. In addition, for the shop that has a central dust system, you can easily build a box that the filters will fit in and hook it up to the central system. You may then use an air hose to blow the dust out of the filters into the dust system. Whichever method you choose, regularly cleaned filters are necessary for optimum performance.
- B.** When sanding, keep the part that you are sanding as close as possible to the top of the table. The downdraft table is designed to pull dust away from your breathing zone. By keeping the work piece close to the top, the machine will capture more of the dust.
- C.** Never use an air hose to blow off the item being sanded. The use of a brush is better because it will not stir up the dust like an air hose.
- D.** Keep your machine running, even when you are not actively using it for sanding. The large volume of air it moves and filters will improve the overall air quality in your shop area.

## **Important:**

Before operating your downdraft table, please take a few minutes to read this booklet. Your new table comes wired to the starter switch from our factory according to the voltage specifications ordered. Take a minute to double check the motor(s) and make sure they are correctly wired to meet your voltage requirements. If you have purchased a three-phase unit, you will need to run conduit and wire to the switch boxes or starters provided. Proper wiring that meets the requirement of all codes in your area is of the utmost importance, and should be done by qualified electricians only.

**Before starting your new table, you should check the following items to insure a safe start up.**

- A.** Make sure all power is disconnected from the machine or locked out properly.
- B.** Raise the top and take out the upper filter media. Directly underneath is an expanded metal guard. Remove the guard (some models will require removal of holding screws), and spin the blower wheel(s) by hand to ensure that there is no interference between the blower and inlet cone. In rare cases, the inlet cone(s) may require adjustment to clear the wheel because of movement in shipping. To adjust, loosen screws and adjust inlet cone position until it does not drag the blower. There should be approximately the same gap all the way around the blower. After seeing that all is clear and the blower spins freely, reassemble in reverse order.
- C.** Check rotation of blowers. Blowers should be turning in a clockwise rotation looking down from the top. If rotation is backwards, this can be corrected by changing the wiring configuration. Schematics are printed on the motors on single-phase units. Changing any two phases of current reverses three-phase motors.
- D.** Check all the filter frame turn buttons to be sure all the frames are secure and in place.
- E.** Make sure the machine is leveled and your machine is now ready for operation.
- F.** Never lift top while machine is running!!!
- G.** Never service machine without first disconnecting power supply.



## Downdraft Table Parts List

Part	Part Name	Part Number	Quantity Required
1	Perforated Top	64665	2
2	Top Frame	64969	1
3	Gasket	64972	3
4	Blower Guard	64973	1
5	Inlet Cone	64974	2
6	Lower Top Panel	64975	1
7	Blower Wheel	64976	2
8	Motor	97993	2
9	Frame Assembly	64978	1
10	Side Outside Filter Frame	64980	2
11	End Outside Filter Frame	64983	2
12	Pre-Filter Blanket 48" x 96"	64987	1
13	Pleated Filter 20" x 25" x 1"	64658	1
14	Pleated Filter 16" x 25" x 1"	64659	1
15	Motor Switch (or starter)	97984	2

**NOTES:** 48" x 96" tables take two blowers, motors, etc.

Gasket material is same on all tables and sizes, but amount need varies with model.

All parts orders must be accompanied by unit serial number.

**Optional Casters:** 64996 – Locking Swivel, Qty 2

64995 – Rigid, Qty 2

---

### REFERENCE CONTACT INFORMATION

**American National Standards Institute (ANSI)**

1899 L Street, NW, 11th Floor • Washington, DC 20036 • Tel: 1 (202) 293-8020

**Compressed Air & Gas Institute**

1300 Sumner Ave. • Cleveland, OH 44115-2851

Tel: 1 (216) 241-7333 • Fax: (216) 241-0105

**European Committee for Standardization**

Rue de Stassart 36 • B - 1050 Brussels, Belgium

**International Organization of Standards**

Case postale 56 • CH-1211 Geneva 20

Tel: + 41 22 749 01 11 • Fax: + 41 22 749 09 47

**Government Printing Office**

Superintendent of Documents • Attn: New Orders

P.O. Box 371954 • Pittsburgh, PA 15250-7954

Tel: 1 (202) 512-1803

**DYNABRADE, INC.**

**[www.dynabrade.com](http://www.dynabrade.com)**

8989 Sheridan Drive • Clarence, NY 14031-1419 • Phone: (716) 631-0100 • Fax: 716-631-2073 • International Fax: 716-631-2524

©DYNABRADE, INC., 2022

