

Pneumatic Drum Vacuum

High Volume Dust & Chip Collection Systems

PD22-15
November, 2022

Safety, Operation and Maintenance - Save This Document and Educate All Personnel

Model No.	Description	Powered By	Air Supply	Capacity
61202	General Purpose	Pneumatic	3/4" NPT	55 Gallon (208 Liters)
61203	For use with tools			
61204	General Purpose Dry Heavy Chip			
61205	General Purpose Wet			

VACUUM

"M" CLASS DRY VACUUM

When employed in accordance with their intended use, the industrial vacuum cleaners described in these operating instructions are suitable for picking up non-flammable, dry dusts.

They correspond to dust class "M" in accordance to: EN 60335-2-69. By SLG, Germany



Find The Most Current Offering of Support Documents and Accessories at www.Dynabrade.com

GENERAL AND TOOL SPECIFIC SECTIONS MUST BE READ AND UNDERSTOOD BEFORE OPERATING ANY PORTABLE PNEUMATIC TOOL!

This document must be read and understood by operating personnel and safety manager. Protection to operating personnel, as well as adjacent areas, shall be maintained at all times. The user and/or the user's employer shall conduct a risk assessment of workplace hazards including exposure limits.

Always comply with: General Industry Safety & Health Regulations (www.osha.gov), International Organization for Standardization (www.iso.org) and Regional Regulations. EN Standards for Hand Held Non-Electric Power Tools (www.cen.eu), American National Standards Institute (www.ansi.org), Compressed Air and Gas Institute (www.cagi.org).

ADDITIONAL SAFETY REFERENCE MATERIALS ARE AVAILABLE AT WWW.DYNABRADE.COM

SAFETY SIGNAL WORDS

	DANGER	Indicates a hazardous situation that, if not avoided, will result in death or serious injury. This signal word is to be limited to the most extreme situations.
	WARNING	Indicates a hazardous situation that, if not avoided, could result in death or serious injury.
	CAUTION	Indicates a hazardous situation that, if not avoided, could result in minor or moderate injury. It may also be used without the safety alert symbol as an alternative to "NOTICE."
	NOTICE	Is the preferred signal word to address practices not related to personal injury. The safety alert symbol shall not be used with this signal word. As an alternative to "NOTICE", the word "CAUTION" without the safety alert symbol may be used to indicate a message not related to personal injury.

SAFETY SYMBOLS

Dynabrade Inc. safety labels/symbols follow the guidelines outlined in ISO 3864. In order to help users understand the meaning of the safety labels/symbols, the standard allows the reproducing of the figures and captions below. Some colored symbols are reproduced in this document in grayscale. A complete color version may be found at www.dynabrade.com.

Geometric surround shapes:

	Warning - A black graphical symbol inside a yellow triangle with a black triangular band defines a safety sign that indicates a hazard.		Prohibition - A black graphical symbol inside a red circular band with a red diagonal bar defines a safety sign that indicates that an action shall not be taken or shall be stopped.		Mandatory Action - A white graphical symbol inside a blue circle defines a safety sign that indicates that an action shall be taken to avoid a hazard.
--	------------------------------------------------------------------------------------------------------------------------------------------------	--	----------------------------------------------------------------------------------------------------------------------------------------------------------------------------------------------	--	---------------------------------------------------------------------------------------------------------------------------------------------------------------

For consistency Dynabrade Inc. also uses the above symbols and word definitions in collateral material, which includes this Pneumatic Tool Safety Guidelines. For product safety information in Product Manuals, Instructions, and other Collateral Materials, Dynabrade Inc. adheres to ANSI Z535.6-2006.

	Refer to instruction manual/booklet		Hearing protection must be worn		Vibration hazard		Air hose hazard
	Eye protection must be worn		Respiratory protection must be worn		Fire hazard		Entanglement hazard
	Electric shock hazard		Safety Alert		Explosion hazard		Crush hazard

⚠ WARNING



Read and understand tool manual before work starts to reduce risk of injury to operator, visitors, and tool.



Ear protection to be worn when exposure to sound, exceeds the limits of applicable Federal, State or local statutes, ordinances and/or regulations.



Respiratory protection to be used when exposed to contaminants that exceed the applicable threshold limit values required by law.



Eye protection must be worn at all times, eye protection to conform to ANSI Z87.1.



Practice safety requirements. Work alert, have proper attire, and do not operate tools under the influence of alcohol or drugs.



Electric shock hazard. Avoid bodily contact with grounded objects, bodies of water. Do not damage cord set.

Read and understand this tool manual before operating your tool. Follow all safety rules for the protection of operating personnel as well as adjacent areas. For safety information, refer to Code of Federal Regulation –CFR 29 Part 1910, NFPA 79, NFPA 70, NFPA 652, IEC, ISO 12100, ISO 14121-2 TR, EN 50281, EN 50495, EN 14986, EN 15188, EN 16009 –Safety Requirements and applicable State and Local Regulations.

Some dust created by sanding, grinding, drilling, and other construction activities contain chemicals known to cause cancer, birth defects or other reproductive harm. Some examples of these chemicals are:

- Lead from lead-based paints
- Crystalline silica from bricks and cement and other masonry products
- Arsenic and chromium from chemically treated lumber

Your risk from these exposures varies, depending on how often you do this type of work. To reduce your exposure to these chemicals: work in a well ventilated area, and work with approved safety equipment, such as those dust masks that are specially designed to filter out microscopic particles.



- Do not use for explosive metallic dust (Aluminum, Magnesium, etc.)
- Never use to exhaust chemical vapors.
- Not to be used for the collection of hot embers / dust particles.

Tool Intent:

The intended use of portable complete vacuum head assembly kit to be used with 55 gallon drums for the safe collecting of dust/chips captured through the process of sanding with hand tools/General purpose of non-metallic materials such as wood, fiberglass, composites, and solid surface, etc.

GENERAL POWER EQUIPMENT SAFETY WARNINGS

Read all safety warnings and all instructions. Failure to follow the warnings and instructions may result in serious injury.
SAVE ALL WARNINGS AND INSTRUCTIONS FOR FUTURE REFERENCE The term “equipment” in the warnings refers to your pneumatic vacuum system.
Do not modify Dynabrade products, they must be used as intended. Modifying equipment may create hazardous situations.

ASSEMBLY AND INSTALL

⚠ WARNING

- Ensure that a clean dry drum is being used in conjunction with DrumVac kit.

⚠ CAUTION

- When unloading equipment from box, all other operators are to remain clear of work-cell.
- Use proper/safe methods when transporting equipment. Improper pushing and pulling methods will increase operator strain.
- When transporting equipment from work-cell to work-cell, do not pull in operator direction.
- Slowly remove vacuum head from packaging and stage on flat surface before assembly.
- Slowly remove interface ring from packaging and install on top of 55 (208 Liters) Gallon Drum.
- With air source disconnected from system, apply the vacuum head to the top of the interface ring and lock in place.
- Ensure air supply connection is properly locked into position at vacuum head inlet.
- Be sure to properly lock down vacuum head to interface ring with provided latches on each side.
- Be sure to keep fingers and hands clear from pinch points upon re-assembly.
- Ensure to install DrumVac kit together with proper 55 (208 Liters) Gallon 33” High x 22 1/2” Dia Cylindrical ASTM grade 1.1mm wall thickness, Carbon Steel Open Head Drum. UN-Solid Rating: 1A2/X400/S

OPERATION

⚠ WARNING

- Store idle equipment out of the reach of children and do not allow persons unfamiliar with the equipment or these instructions to operate the equipment.
- Use the equipment, accessories, etc. in accordance with these instructions, taking into account the working conditions and the work to be performed.
- Regularly clean the equipment's air vents, as excessive accumulation of dust may cause premature failure.
- Do not operate equipment with vacuum head removed from DrumVac assembly.
- Do not operate equipment in explosive environments, such as in the presence of flammable liquids, gases, or dust 1/32"(.8mm) Combustible dust based on NFPA standards. This equipment could create sparks which ignite the dust or fumes.

⚠ CAUTION

- Do not use the equipment as a means of transportation.
- Do not transport or use equipment on uneven or inclined surfaces.
- Stay alert, watch what you are doing and use common sense when operating equipment. Do not use equipment while you are tired or under the influence of drugs, alcohol or medication.
- Use personal protective equipment. Always wear eye protection. Protective equipment such as dust masks, non-skid safety shoes, hard hat, or hearing protection used for appropriate conditions will reduce personal injury.
- Do not use the airline for anything other than what it is intended for. Never use the airline for carrying, pulling or unplugging the equipment. Keep airline away from heat, oil, sharp edges or moving parts.
- Do not use the DrumVac kit unless fully assembled as intended with drum. Ensure all vacuum connections have been made before turning unit to on position.
- Ensure DbA level while using DrumVac does not exceed acceptable levels per operators shift, based on governing body guidelines.
- The vacuum system will operate by an on/auto/manual switch located on the front of the Motorhead/Vacuum Head Assembly. This switch must be turned on to activate the Motorhead.
- Dress properly. Do not wear loose clothing or jewelry. Keep your hair, clothing and gloves away from moving parts. Loose clothes, jewelry or long hair can be caught in moving parts.

MAINTENANCE INSTRUCTIONS

⚠ WARNING

- Avoid providing maintenance in areas where combustible dust accumulation is greater than 1/32"(.8mm). Combustible dust based on NFPA standards. This equipment could create sparks which ignite the dust or fumes.
- Use the proper equipment to handle and dump the 55 (208 Liters) Gallon drum when full of collected debris. Keep all surrounding areas free of additional operators when transport and dumping of drum takes place.

⚠ CAUTION

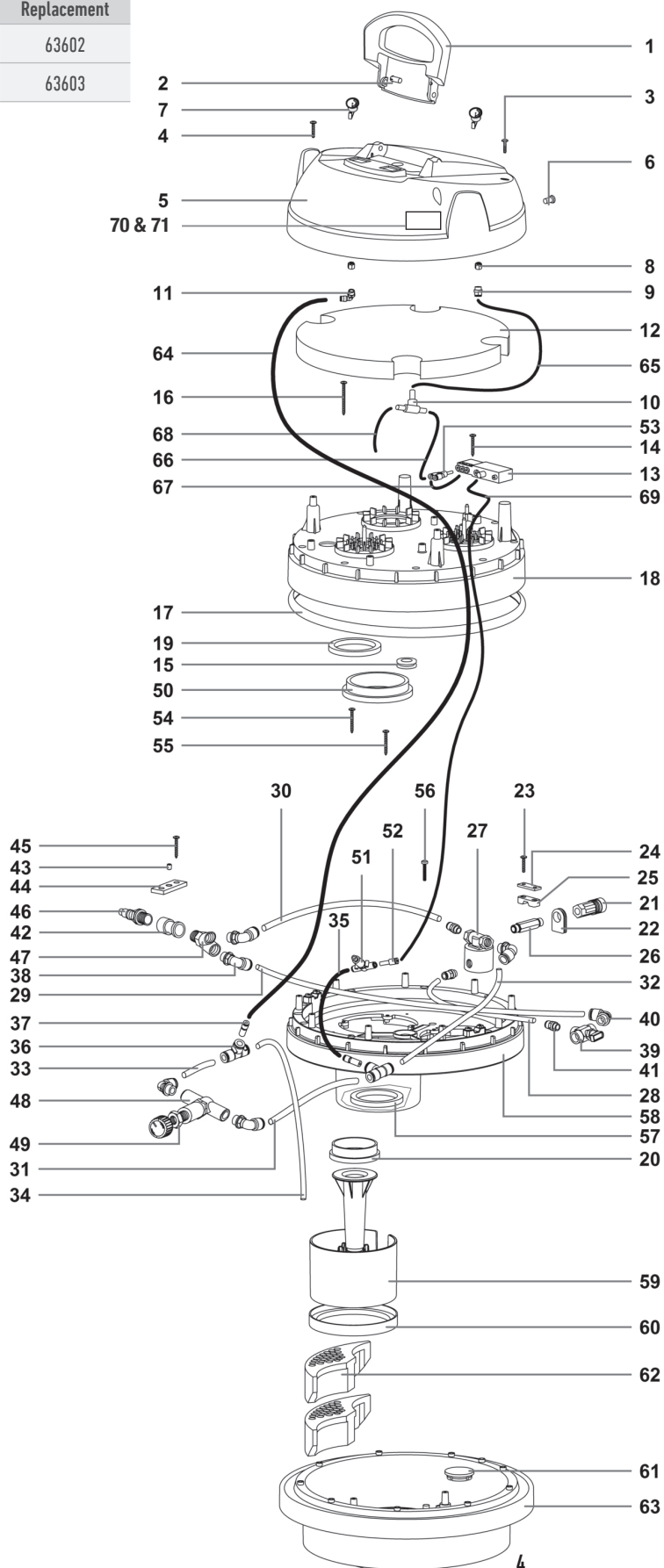
- Use only genuine Dynabrade replacement parts to ensure quality. To order replacement parts, specify Model # and Serial # of your equipment.
- Have your equipment serviced by a qualified repair person using only identical replacement parts.
- Unplug vacuums main air supply before providing maintenance.

EQUIPMENT USE AND CARE

- Prevent unintentional starting. Ensure the switch is in the off-position before connecting to power source.
- Do not overreach. Keep proper footing and balance at all times. This enables better control of the equipment in unexpected situations.
- Do not let familiarity gained from frequent use of equipment allow you to become complacent and ignore tool safety principles. A careless action can cause severe injury within a fraction of a second.

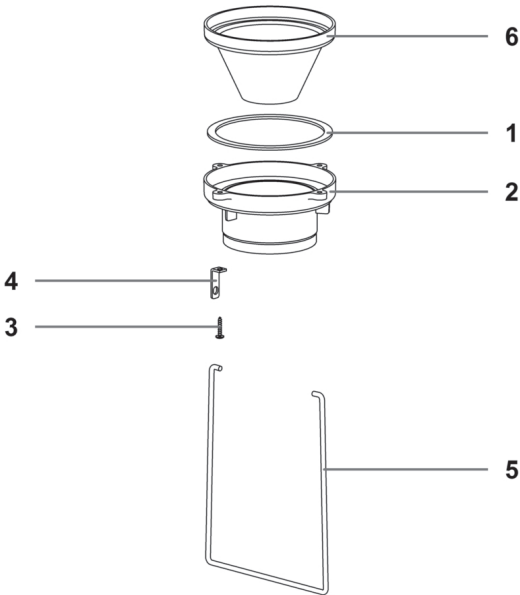
Pneumatic Vacuum Head Complete Assembly

Model No.	Head Replacement
61202	63602
61203	63603



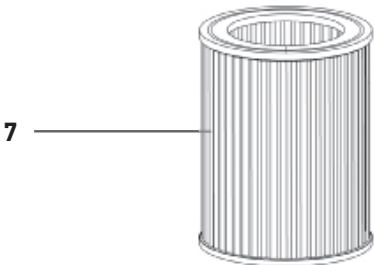
ITEM	DESCRIPTION	P/N	QTY
1	HANDLE	32020	1
2	HANDLE PIN	32021	2
3	SCREW	32022	2
4	SCREW	32023	2
5	LID	32024	1
6	KNOB	32025	1
7	PRESSURE GAUGE	32026	2
8	NUT	32027	2
9	COUPLING	32028	1
10	COUPLING	32029	1
11	QUICK CONNECT.	32030	1
12	MUFFLER	32031	1
13	PNEUMATIC TIMER	32032	1
14	SCREW	32033	1
15	GROMMET	32034	1
16	SCREW	32035	9
17	GASKET	32036	1
18	LAYER 2	32037	1
19	GASKET	32038	1
20	MOTOR RING	32039	1
21	QUICK CONNECT	32040	1
22	GROMMET GUIDING SLIT	32041	1
23	SCREW	32042	2
24	BRACKET	32043	1
25	FIXING BLOCK	32044	1
26	GALVANIZED NIPPLE	32045	1
27	PNEUMATIC VALVE	32046	1
28	TUBE	32047	1
29	TUBE	32048	1
30	TUBE	32049	1
31	TUBE	32050	1
32	TUBE	32051	1
33	TUBE	32052	1
34	TUBE	32053	1
35	TUBE	32054	1
36	QUICK CONNECT	32055	2
37	TUBE FITTING	32056	2
38	QUICK CONNECT	32057	3
39	AIR VALVE	32058	1
40	QUICK CONNECT	32059	3
41	QUICK CONNECT	32060	3
42	COUPLING	32061	1
43	DOWEL	32062	1
44	PLATE	32063	1
45	SCREW	32064	2
46	PLUG	32065	1
47	"Y" COUPLING	32066	1
48	VALVE	32067	1
49	NUT	32068	1
50	GASKET	32069	1
51	REDUCER	32070	1
52	QUICK CONNECT	32071	1
53	"Y" COUPLING	32072	1
54	SCREW	32073	9
55	SCREW	32074	3
56	SCREW	32075	1
57	GASKET	32076	1
58	LAYER 1	32077	1
59	VENTURI	32078	1
60	GASKET	32079	1
61	BASE CAP	32080	2
62	FOAM INSERT	32081	6
63	BASE	32082	1
64	TUBE	32083	1
65	TUBE	32084	1
66	TUBE	32085	1
67	TUBE	32086	1
68	TUBE	32087	1
69	TUBE	32088	1
70	LABEL FOR 61202	32089	1
71	LABEL FOR 61203	32090	1

Pneumatic Filter Assembly
Complete Assembly



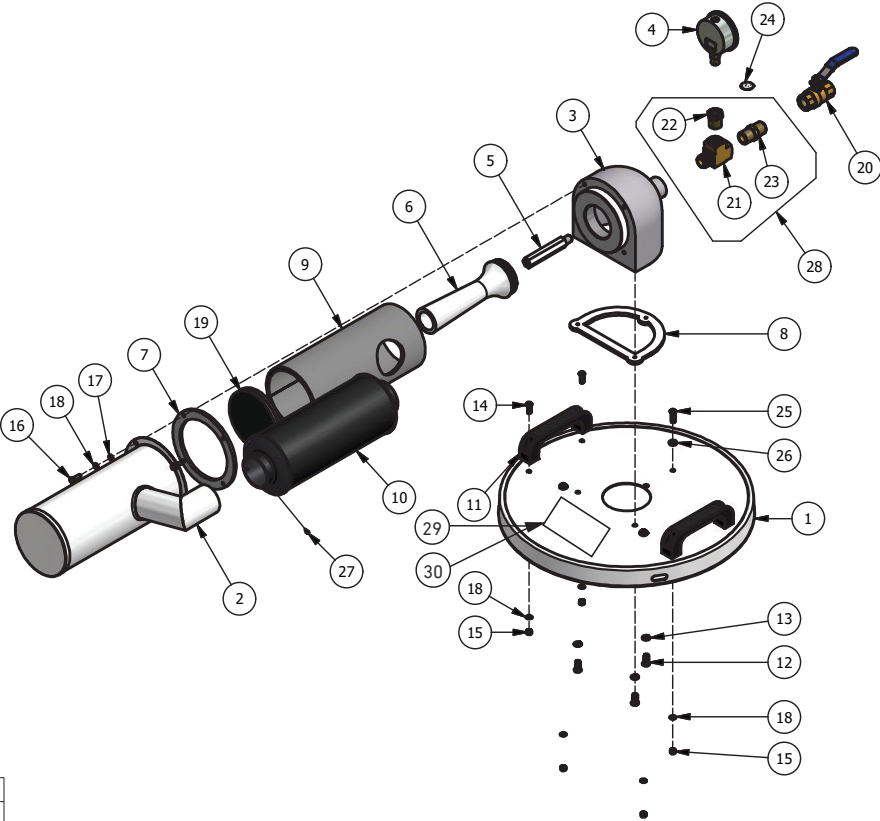
ITEM	DESCRIPTION	P/N	QTY
1	GASKET	32193	1
2	CARTRIDGE HOLD	32194	1
3	SCREW	32195	4
4	BRACKET FILTER	32196	2
5	ROD FILTER	32197	1
6	CONE	32198	1
7	HEPA FILTER	80459	1

Filter



Pneumatic Vacuum Head Complete Assembly

Model No.	Head Replacement
61204	63604
61205	



ITEM	DESCRIPTION	P/N	QTY
1	LID	62040	1
2	SILENCER HOUSING	62813	1
3	DOME	62810	1
4	PRESSURE GAUGE	62812	1
5	AIR JET	62594	1
6	BLOWER CHAMBER SHORT	62595	1
7	GASKET	62396	1
8	GASKET	62357	1
9	1/4" BLACK NITRILE SILENCER	62750	1
10	ROUND SILENCER	62041	1
11	HANDLE	62816	2
12	BOLT	62358	3
13	SPRING WASHER	62367	3
14	BOLT	62352	4
15	HEX NUT	62363	7
16	BOLT	62590	4
17	SEAL WASHER	62402	4
18	FLAT WASHER	62361	11
19	1/4" BLACK NITRILE CUT CIRCLE	62751	1
20	BALL VALVE BRASS	62365	1
21	CONNECTOR, 3 WAY	62353	1
22	REDUCER BUSHING	62598	1
23	HEX NIPPLE	62599	1
24	STICKER, GROUND LOCATION	62042	1
25	BOLT	62375	3
26	SEAL WASHER	62399	3
27	PAN HEAD DRILLING SCREW	62043	3
28	CONNECTOR ASSEMBLY	62044	1
29	LABEL FOR 61204	62045	1
30	LABEL FOR 61205	62046	1

Filter Cage



32014

Hat Filter



32013
For Model: 61204

Wet Filter



32015
For Model: 61205

Vacuum Head, Filter, Interface Ring and Inlet Kit

*Drum and Wheeled Base Sold Separately

61202

ITEM	DESCRIPTION	P/N
1	VACUUM HEAD	63602
2	HEPA FILTER	80459
3	INTERFACE RING	62347
4	SINGLE INLET	32012

61203

ITEM	DESCRIPTION	P/N
1	VACUUM HEAD	63603
2	HEPA FILTER	80459
3	INTERFACE RING	62347
4	SINGLE INLET	32012

61204

ITEM	DESCRIPTION	P/N
1	VACUUM HEAD	63604
2	FILTER CAGE	32014
3	HAT FILTER	32013
4	INTERFACE RING	62346
5	SINGLE INLET	32012

61205

ITEM	DESCRIPTION	P/N
1	VACUUM HEAD	63604
2	FILTER CAGE	32014
3	WET FILTER	32015
4	INTERFACE RING	62346
5	SINGLE INLET	32012

96746 General Purpose Cleaning Kits

*For use with DrumVac Kits 61202, 61204 and 61205.

ITEM	DESCRIPTION	P/N
1	WAND	62341
2	REDUCER/TAPERED	62343
3	LARGE UTILITY FLOOR TOOL	62342
4	SMALL UTILITY FLOOR TOOL	62822
5	ROUND BRUSH	62727
6	CREVICE TOOL	62821
7	CUFF	31999
8	1-1/2" VACUUM HOSE	62340

Coaxial Vacuum Hose Assembly

(QTY 1) – Part no. 32005 1-1/4" Dia. x 20' (32 mm x 6m)

*For use with DrumVac Kit 61203.

ITEM	DESCRIPTION	P/N
1	1" VAC HOSE, STATIC CONDUCTIVE, 20 FT	N/A
2	OVERHOSE ASSEMBLY	31890
4	PLUG - 1/4 NPT, FEMALE	95677
5	HOSE - 5/16" ID X 20 FT	N/A
6	CRIMP FREE 8 MM ID FITTING, 1/4 NPT MALE (2)	94897
7	HOSE CUFF, 1" THREAD - 1 1/2" CONNECTION	62574
8	COUPLER - 1/4 IN. FPT MEGA FLOW	95674
9	HOSE CUFF, 1" THD. TO 1" NON THD.	31900
10	6 IN. MINI CABLE TIE (2)	98668

COMPONENTS AND FEATURES

Description of Pneumatic Controls

(B) BLACK SWITCH (I O II)

(select different working modes)

MODE "0": machine is off

MODE "I": the motors are working with cyclic cleaning of the cartridge filter

MODE "II": pneumatic vacuum head control system is in automatic mode and the cleaning of the cartridge filter are working.

Vacuum head motor turns on or off automatically depending on whether or not the following accessories are on or off:

- The air tool connected to the compressed air supply.

When the tool is switched off, after about 4 seconds the vacuum head will switch off.

TECHNICAL SPECIFICATIONS — PORTABLE VACUUM SYSTEMS

Model No.	Description	Powered By	Noise Level dB(A)	Air Pressure PSIG	Filter H.E.P.A.	Air Supply	Unit Capacity Size	Supporting Accessories	Operators					
61202	General Purpose	Pneumatic	87	80 - 150 (5.6 - 10.4 kg/cm²)	0.3 micron	3/4" NPT	55 Gallon (208 Liters)	96746	1					
61203	For use with tools							32005						
61204	General Purpose Dry Heavy Chip		85					96746						
61205	General Purpose Wet													

Additional Specifications: Suggested Air Supply Line to all DrumVac Kits should be: 1/2" (13mm) minimum.

REPLACEMENT PARTS

Filter Lock



80431

Single Inlet Fitting



32012

Interface Ring



62347
For Use with
Model 61202 & 61203

Interface Ring



62346
For Use with
Model 61204 & 61205

HEPA Filter



80459

Hat Filter



32013
For Model: 61204

Filter Cage



32014

Wet Filter



32015
For Model: 61205

ACCESSORIES

55 Gallon Drum



32016

Vac Hose



32005

General Purpose Cleaning Kit



96746

Wheeled Base



32010



"M" CLASS DRY VACUUM

DYNABRADE, INC.

www.dynabrade.com

8989 Sheridan Drive • Clarence, NY 14031-1419 • Phone: (716) 631-0100 • Fax: 716-631-2073 • International Fax: 716-631-2524
©DYNABRADE, INC., 2022

