

Model:

18040 – 3/8"

18041 – 1/2"

Heavy-Duty Ratchet

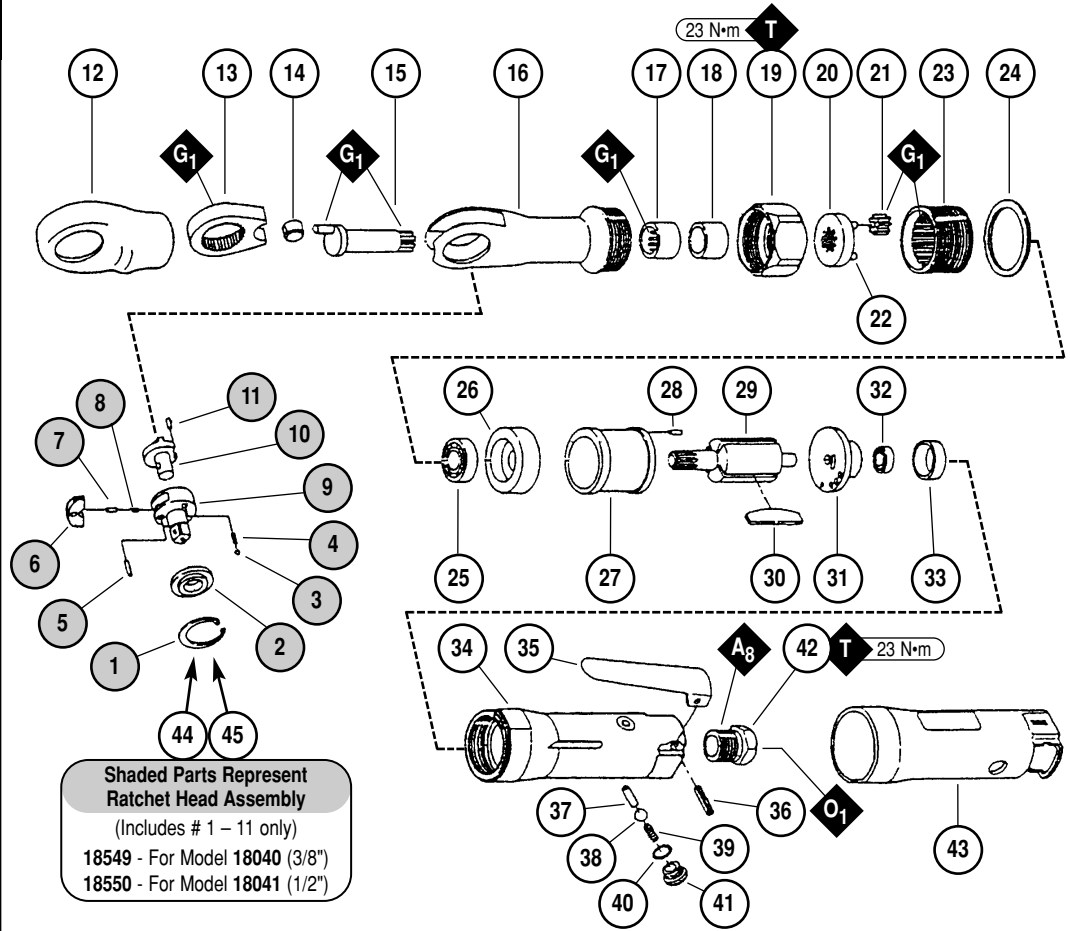
Air Motor and Machine Parts

! WARNING

Always operate, inspect and maintain this tool in accordance with the Safety Code for portable air tools (ANSI B186.1) and any other applicable safety codes and regulations. Please refer to Dynabrade's Warning/Safety Operating Instructions for more complete safety information.

Index Key

No.	Part #	Description
1	18520	Retaining Ring
2	18518	Thrust Washer – 3/8"
	18519	Thrust Washer – 1/2"
3	18517	Steel Ball
4	18516	Thrust Washer Spring
5	18513	Dowel Pin
6	18510	Ratchet Pawl
7	18511	Reverse Pin
8	18512	Reverse Spring
9	18514	3/8" Square Anvil
	18515	1/2" Square Anvil
10	18508	Reverse Lever – 3/8"
	18509	Reverse Lever – 1/2"
11	18507	Roll Pin
12	18503	Boot
13	18504	Yoke
14	18505	Drive Bushing
15	18506	Crank Shaft
16	18521	Ratchet Housing
17	18522	Needle Bearing
18	18523	Bush
19	18524	Lock Ring
20	18525	Planet Cage (Includes 18526 Pins)
21	18527	Planet Gear
22	18526	Planet Pin
23	18528	Internal Gear
24	18529	Lock Washer
25	18530	Bearing
26	18531	Front Plate
27	18532	Cylinder
28	18533	Roll Pin
29	18534	Rotor
30	18535	Blade (4/pkg.)
31	18536	Rear Plate
32	18537	Bearing
33	18538	Bearing Cap
34	18539	Motor Housing
35	18547	Throttle Lever
36	18545	Lever Pin
37	18544	Valve Pin
38	18543	Valve
39	18491	Valve Spring
40	18541	O-Ring
41	18540	Valve Screw
42	18546	Inlet Bushing (Includes Screen)
43	18548	Housing Cover
44	18549	Ratchet Head Assembly – 3/8"
45	18550	Ratchet Head Assembly – 1/2"



Shaded Parts Represent Ratchet Head Assembly
(Includes # 1 – 11 only)
18549 - For Model 18040 (3/8")
18550 - For Model 18041 (1/2")

KEY	
O	Oil: O ₁ = Air Lube
G	Grease: G ₁ = Lubriplate 630 AA
A	Adhesive: A ₈ = Loctite #567
T	Torque: N•m x 8.85 = In. - lbs.

See reverse side for Important Operating, Maintenance and Safety Instructions.

Autobrade Red Important Operating, Maintenance and Safety Instructions

Carefully read all instructions before operating or servicing any Dynabrade® Abrasive Power Tool.

Warning: Hand, wrist and arm injury may result from repetitive work motion and overexposure to vibration.

Important: All Dynabrade air tools must be used with a Filter-Regulator-Lubricator to maintain all warranties.

Operating Instructions:

Warning: Eye, face, respiratory, sound and body protection must be worn while operating power tools. Failure to do so may result in serious injury or death. Follow safety procedures posted in workplace.

1. With power source disconnected from tool, securely fasten abrasive/accessory on tool.
2. Install air fitting into inlet bushing of tool. **Important:** Secure inlet bushing of tool with a wrench before attempting to install the air fitting to avoid damaging valve body housing.
3. Connect power source to tool. Be careful not to depress throttle lever in the process.
4. Check tool speed with tachometer. If tool is operating at a higher speed than the RPM marked on the tool or operating improperly, the tool should be serviced to correct the cause before use.

Maintenance Instructions:

1. Check tool speed regularly with a tachometer. If tool is operating at a higher speed than the RPM marked on the tool, the tool should be serviced to correct the cause before use.
2. Some silencers on air tools may clog with use. Clean and replace as required.
3. All Dynabrade rotary vane style air motors should be lubricated. Dynabrade recommends one drop of air lube per minute for each 10 SCFM (example: if the tool specifications state 40 SCFM, set the drip rate of your filter-lubricator at 4 drops per minute). Dynabrade Air Lube (P/N **95842**: 1 pt. 473 ml.) is recommended.
4. An Air Line Filter-Regulator-Lubricator must be used with this air tool to maintain all warranties. Dynabrade recommends the following: **11405** Air Line Filter-Regulator-Lubricator — Provides accurate air pressure regulation, two-stage filtration of water contaminants and micro-mist lubrication of pneumatic components. Operates 40 SCFM @ 100 PSIG has 3/8" NPT female ports.
5. Use only genuine Dynabrade replacement parts. To reorder replacement parts, specify the **Model #**, **Serial #**, and **RPM** of your machine.
6. Mineral spirits are recommended when cleaning the tool and parts. Do not clean tool or parts with any solvents or oils containing acids, esters, keytones, chlorinated hydrocarbons or nitro carbons.

Safety Instructions:

Products offered by Dynabrade should not be converted or otherwise altered from original design without expressed written consent from Dynabrade, Inc.



- **Important:** User of tool is responsible for following accepted safety codes such as those published by the American National Standards Institute (ANSI).
- Operate machine for one minute before application to workpiece to determine if machine is working properly and safely before work begins.
- Always disconnect power supply before changing abrasive/accessory or making machine adjustments.
- Inspect abrasives/accessories for damage or defects prior to installation on tools.
- Please refer to Dynabrade's Warning/Safety Operating Instructions Tag (Reorder No. **95903**) for more complete safety information.
- **Warning:** Hand, wrist and arm injury may result from repetitive work, motion and overexposure to vibration.

Autobrade Red Tool Warranty

Following the reasonable assumption that any inherent defect which might prevail in a product will become apparent to the user within **6 months** from the date of purchase, "Autobrade Red" tools are warranted against defects in workmanship and materials under normal use and service.

We shall, at our option, repair or replace at our factory, any "Autobrade Red" tool which shall, within 6 months after delivery to the original purchaser, indicate upon our examination to have been defective.

Our obligation is contingent upon proper use of "Autobrade Red" tools in accordance with factory recommendations, instructions and practices.

The warranty shall not apply in these cases:

1. Normally wearable parts such as bearings, rotor blades, etc.
2. Consumables such as sanding pads, etc.
3. Misuse, neglect in maintaining tool or tool modification.
4. Lack of lubrication or evidence of rust, dirt or corrosion.
5. Tools requiring normal tune-up or cleaning.
6. Tools being used after they are badly worn such as using ratchet with worn yoke.
7. Ratchets, anvils damaged by excessive hand torquing.
8. Use in production-type applications.

Products to be considered for warranty must be sent back to our factory, transportation prepaid by the user. Please send tool back to attention of "Repair Department" with note fully explaining the nature of the problem along with a copy of original invoice indicating model and serial number.

Return product to:

Dynabrade, Inc.

Attn: Repair Department

8989 Sheridan Dr.

Clarence, NY 14031

Visit Our Web Site: www.dynabrade.com

