

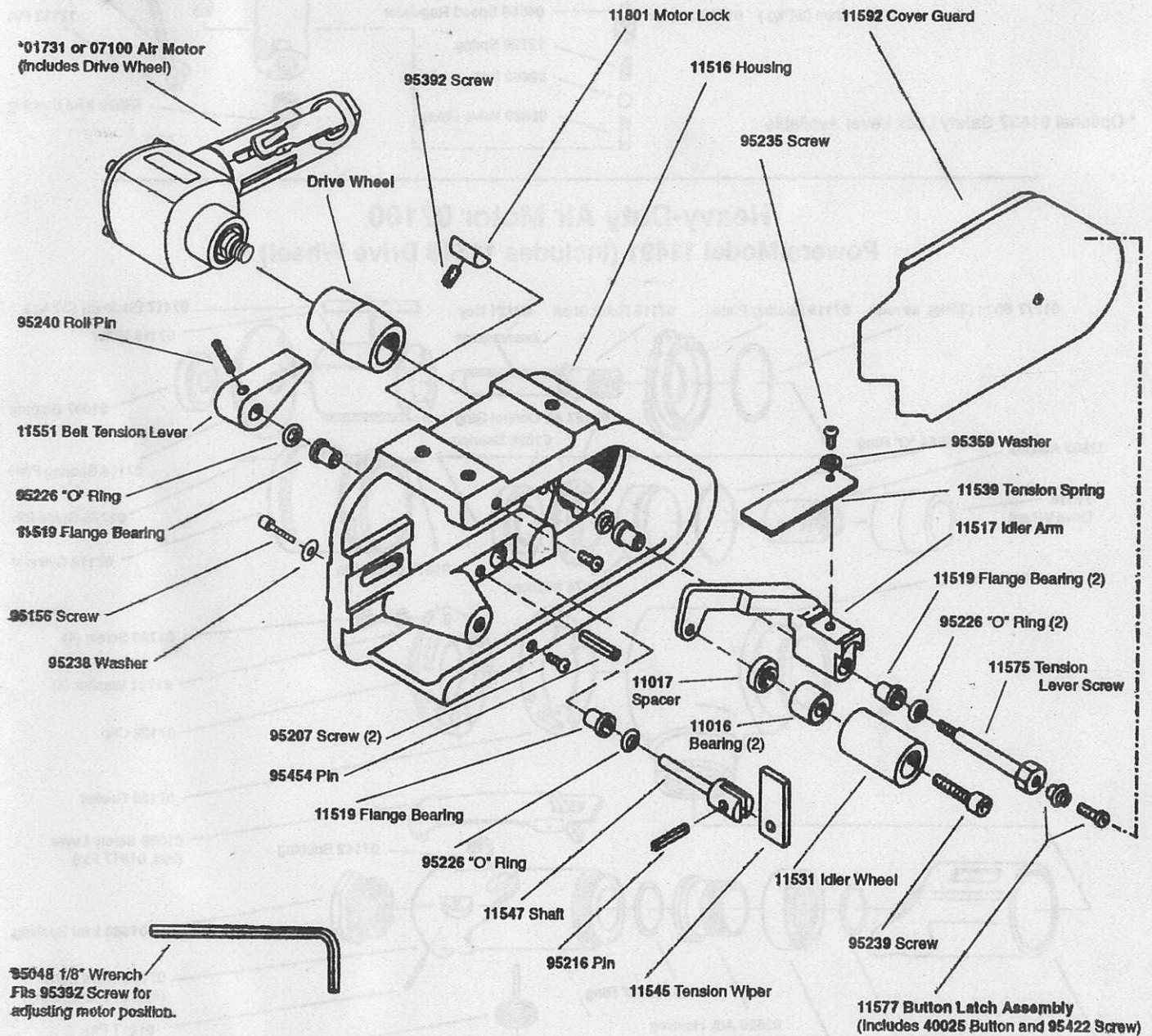
# Dynabelter® Tool Post Grinder

**Models:**  
**11490 - Standard Duty**  
**11491 - Heavy Duty**

**1" Wide Abrasive Belt Capacity**  
**For Serial Number 8458 and Higher**

## ! WARNING

Always operate, inspect and maintain this tool in accordance with the Safety Code for portable air tools (ANSI B186.1) and any other applicable safety codes and regulations. Please refer to Dynabrade's Warning/Safety Operating Instructions for more complete safety information.

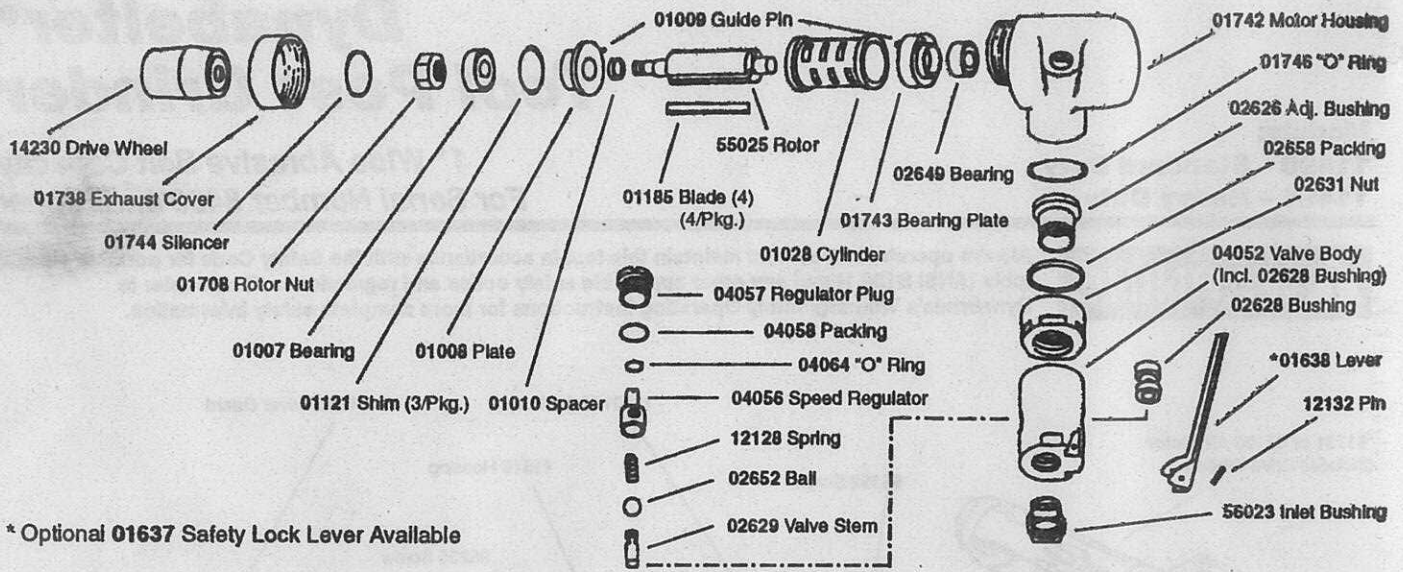


See page 3 for Standard Contact Arm Assembly and optional accessories.

\*See page 2 for 01731 and 07100 Motor Assemblies.

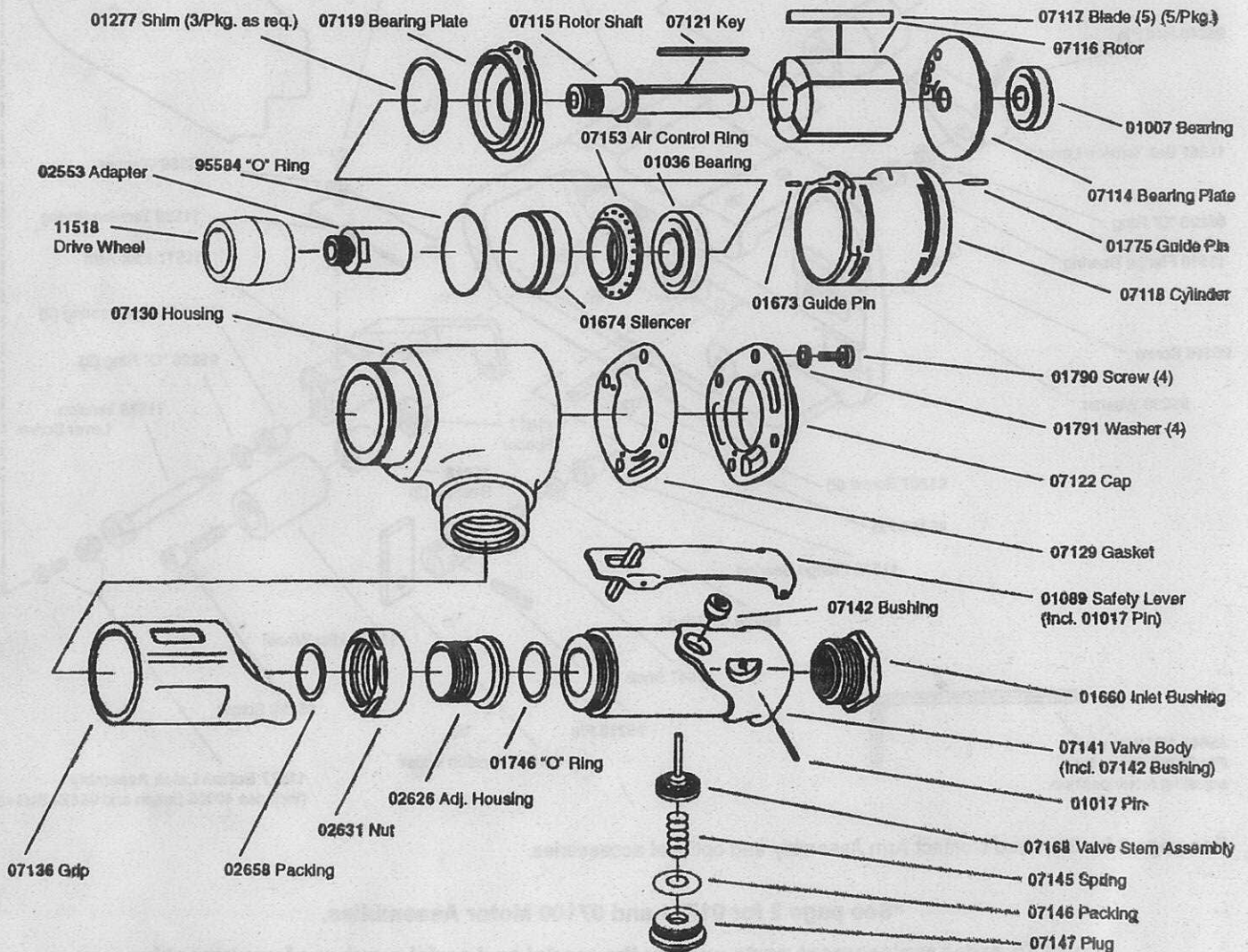
**Note: To order replacement parts specify the model and serial number of your machine.**  
**See back page for Important Operating/Maintenance and Safety Instructions before operating this tool.**

## Standard Duty Air Motor 01731 Powers Model 11490 (Includes 14230 Drive Wheel)



\* Optional 01637 Safety Lock Lever Available

## Heavy-Duty Air Motor 07100 Powers Model 11491 (Includes 11518 Drive Wheel)



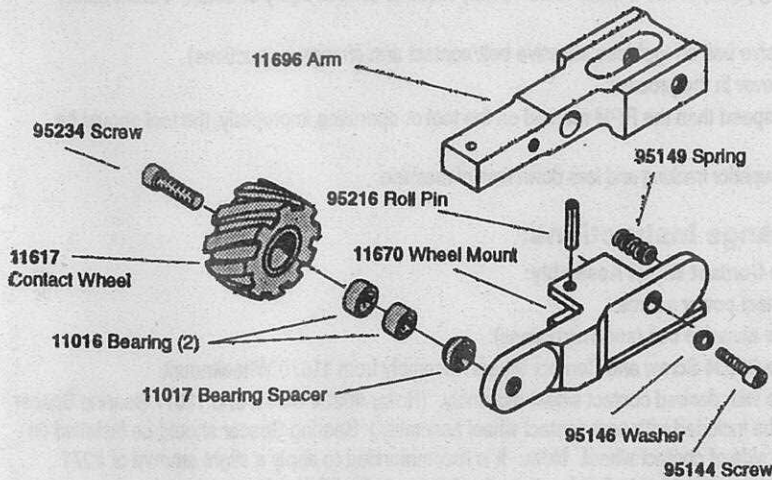


## 11698 Standard Contact Arm Assembly

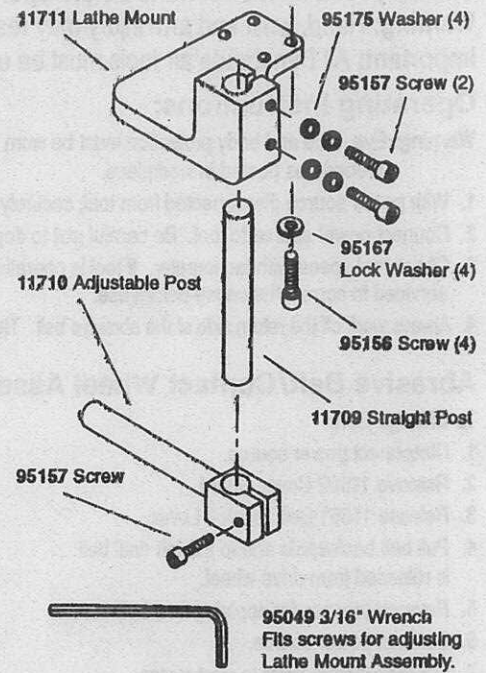
**Belt Size:** 1" wide x 24" long.

**Contact Wheel:** 1" wide x 2" diameter. 90-Duro standard serrated urethane. (Other wheels may be substituted, see chart below).

Shaded parts indicate 11618 Contact Wheel Assembly.



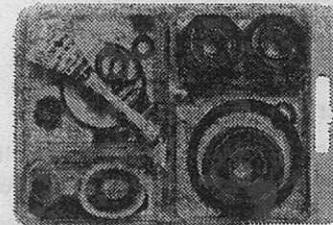
## 11708 Lathe Mount Assembly



### 1" x 2" Urethane Wheel Assemblies Available for 11698 Contact Arm Assembly

Durometer	Serration	Color	Part No.
90	Scoop	Amber	11614
90	Standard	Amber	11618
80	Standard	Blue	11652
70	Standard	Green	11650
60	Standard	Red	11648

Note: Higher durometer indicates harder wheel for more aggressiveness. Scoop serration also is more aggressive than standard serration.



### • 96011 Tune-Up Kit

Includes assorted parts to help maintain motor in tip-top shape.

## Abrasive Belts

### Coated Aluminum Oxide/1" wide x 24" long

Tough, durable synthetic used for work on high carbon steels, general metalworking and certain hardwoods.

Unit = 200 Belts

Grit	40	60	80	100	120	180	220	320	500
P/N	90478	90482	90483	90491	90484	90486	90487	90488	90489

### Coated Aluminum Zirconia/1" wide x 24" long

Synthetic grain with self-sharpening characteristics providing continuous new cutting edges for greater efficiency.

Unit = 200 Belts

Grit	60	80
P/N	90485	90474

### Abrasive Impregnated NWN/1" wide x 24" long

Mineral is impregnated in non-woven fiber. Results in consistent surface conditioning and cleaning.

Unit = 12 Belts

Super Fine	Very Fine	Medium	Coarse
90399	90402	90416	90462

### Coated Silicon Carbide/1" wide x 24" long

Sharp, fast penetrating grain. Ideal for use on soft materials such as glass, plastics and fibrous woods.

Unit = 200 Belts

Grit	60	80	120
P/N	90480	90481	90544

# Important Operating, Maintenance and Safety Instructions

Carefully read all instructions before operating or servicing any Dynabrade® Abrasive Power Tool.

**Warning:** Hand, wrist and arm injury may result from repetitive work motion and overexposure to vibration.

**Important:** All Dynabrade air tools must be used with a Filter-Regulator-Lubricator to maintain all warranties.

## Operating Instructions:

**Warning:** Eye, face and body protection must be worn while operating power tools. Failure to do so may result in serious injury or death. Follow safety procedures posted in workplace.

1. With power source disconnected from tool, securely position abrasive belt on tool (see abrasive belt/contact arm change instructions).
2. Connect power source to tool. Be careful **not** to depress throttle lever in the process.
3. Check tool speed with tachometer. If tool is operating at a higher speed than the RPM marked on the tool or operating improperly, the tool should be serviced to correct the cause before use.
4. Always work off the return side of the abrasive belt. This will ensure superior tracking and less down time of machine.

## Abrasive Belt/Contact Wheel Assembly Change Instructions:

### To Change Belt:

1. Disconnect power source.
2. Remove 11592 Cover Guard.
3. Release 11551 Belt Tension Lever.
4. Pull belt backwards and to the left until belt is released from drive wheel.
5. Reverse process for applying new belt.
6. Connect power source.
7. Depress throttle lever to start motor and belt rotation.
8. Adjust belt tracking by turning 95144 Belt Tracking Screw on contact arm assembly to the left or right accordingly.

### To Change Contact Wheel Assembly:

1. Disconnect power source.
2. Remove abrasive belt (see instructions).
3. Remove 95234 Screw and Contact Wheel Assembly from 11670 Wheelmount.
4. Replace with desired contact wheel assembly. (Note: 95234 Screw and 11017 Bearing Spacer should be included with new contact wheel assembly.) Bearing Spacer should be installed on shallow side of contact wheel. Note: It is recommended to apply a slight amount of #271 Loctite® (or equivalent) to first few threads of screw before tightening. Please allow 30 minutes for adhesives to dry before operating tool.

## Maintenance Instructions:

Products offered by Dynabrade should not be converted or otherwise altered from original design without expressed written consent from Dynabrade, Inc. All Dynabrade air tools must be used with a filter-regulator-lubricator to maintain all warranties.

1. Check tool speed regularly with a tachometer. If tool is operating at a higher speed than the RPM marked on the tool, the tool should be serviced to correct the cause before use.
2. Some silencers on air tools may clog with use. Clean and replace as required.
3. All Dynabrade air motors should be lubricated with two drops of Dynabrade Air Lube (P/N 95842: 1pt. 473ml.) every four hours of use.
4. An air line filter-regulator-lubricator must be used with this air tool to maintain all warranties. Dynabrade recommends the following:  
11299 Air Line Filter-Regulator-Lubricator — Provides accurate air pressure regulation, two-stage filtration of water contaminant's and micro-mist lubrication of pneumatic components. Operates 100 CFM @ 90 PSI has 1/2" NPT female ports.

## Safety Instructions:

- **Important:** User of tool is responsible for following accepted safety codes such as those published by the American National Standards Institute (ANSI).
- **Warning:** Eye, face and body protection must be worn when operating power tools. Failure to do so may result in serious injury or death.
- Products offered by Dynabrade should not be converted or otherwise altered from original design without the expressed written consent of Dynabrade, Inc..
- Tool RPM rating must never exceed abrasive/accessory RPM rating, regardless of tools capacity.
- Operate machine for one minute before application to workpiece to determine if machine is working properly and safely before work begins.
- Always use proper guards. Make sure guards are in proper position, secure and in good repair.
- Always disconnect power supply before changing abrasive or making machine adjustments.
- Inspect abrasives for damage or defects prior to installation on tools. Make sure belts are mounted properly; check for proper tension and belt tracking.
- Please refer to Dynabrade's Warning/Safety Operating Instructions Tag (Reorder No. 95903) for more complete safety information.

Loctite® is a registered trademark of the Loctite Corp.



**DYNABRADE, INC.,** 8989 Sheridan Drive • Clarence, New York 14031-1490 • Telephone: (716) 631-0100 • Fax: 716-631-2073  
**DYNABRADE EUROPE s.a.r.l.,** Zone Artisanale • L-6485 Wormeldange—Haut, Luxembourg • Telephone: 352 76 84 94 • Fax: 352 76 84 96

© DYNABRADE, INC., 1993

PRINTED IN USA