

Model:

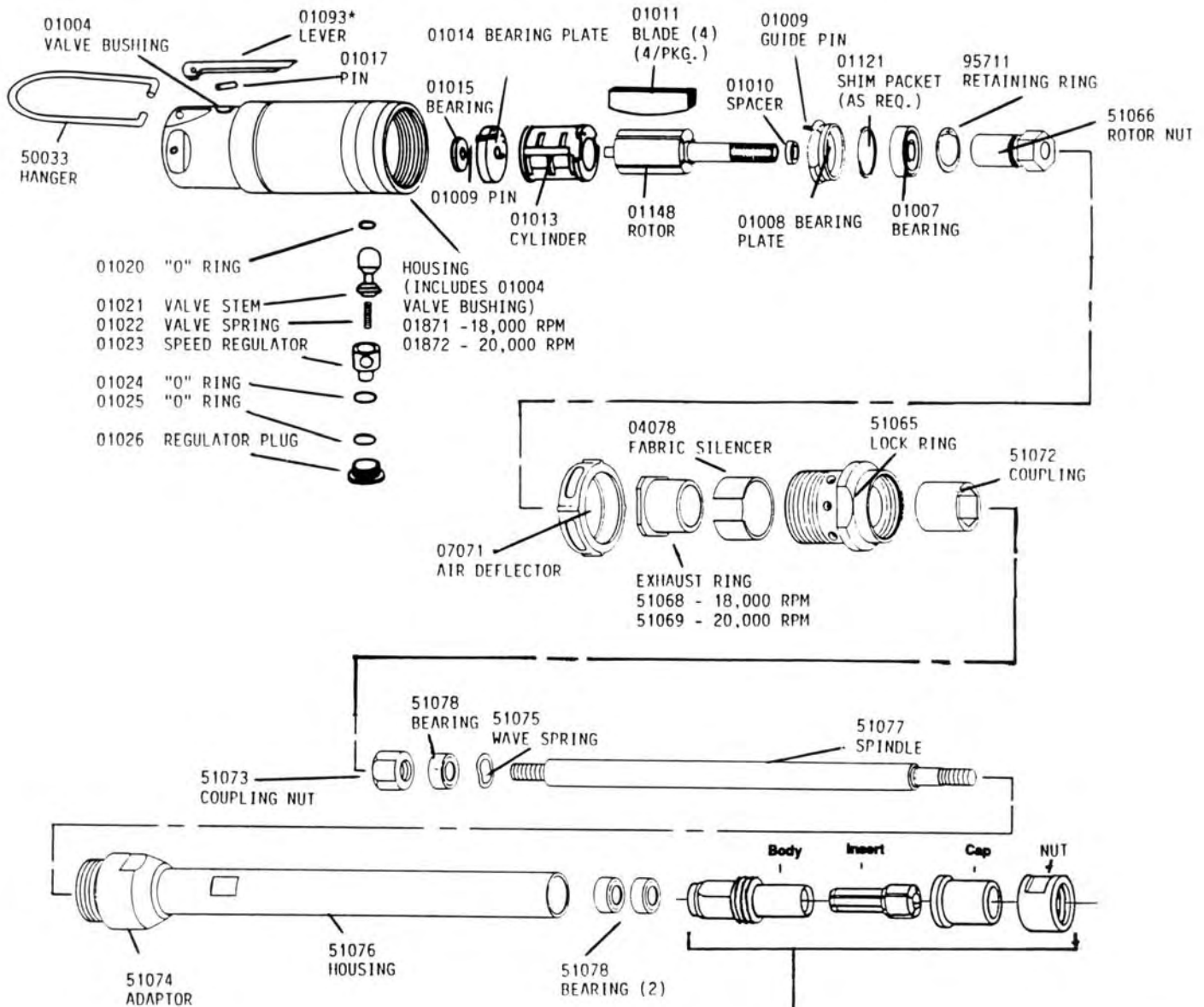
- 51023 — 1/4" — 18,000 RPM
- 51024 — 1/4" — 20,000 RPM
- 51053 — 6mm — 18,000 RPM
- 51054 — 6mm — 20,000 RPM

Extension Die Grinder

Machine and Motor Parts

! WARNING

Always operate, inspect and maintain this tool in accordance with the Safety Code for portable air tools (ANSI B186.1) and any other applicable safety codes and regulations. Please refer to Dynabrade's Warning/Safety Operating Instructions for more complete safety information.

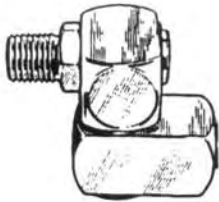


*01089 Safety-Lock Throttle Lever Available.

51124 — 1/4" Collet Includes:	OR	51110 — 6mm Collet Includes:
51107 — Cap		51107 — Cap
51098 — Retaining Nut		51108 — Retaining Nut
51627 — Body		51109 — Body
01485 — 1/4" Insert		51114 — 6mm Insert

See reverse side for Accessories and Important Operating Instructions.

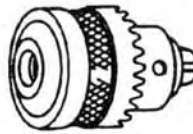
Accessories



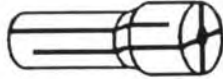
Dynaswivel®

Swivels 360° at two locations which allows an air hose to drop straight to the floor, no matter how the tool is held.

- 95460 1/4" NPT
- 95461 3/8" NPT
- 95462 1/2" NPT



53031 – 1/4" Drill Chuck Includes:
• 53051 Mated Chuck Key



51113 – 3 mm Collet Insert

- Fits inside 51110 Collet

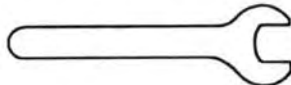
51112 – 1/8" Collet Insert

- Fits inside 51106 Collet

95600 Motor Tune-Up Kit

- Includes assorted parts to help maintain motor in tip-top shape.

Wrenches



96032 – 11/16" open-end

96031 – 7/16" open-end

Important Operating, Maintenance and Safety Instructions

Carefully read all instructions before operating or servicing any Dynabrade® Abrasive Power Tool.

Warning: Hand, wrist and arm injury may result from repetitive work motion and overexposure to vibration.

Operating Instructions:

Warning: Eye, face and body protection must be worn while operating power tools. Failure to do so may result in serious injury or death. Follow safety procedures posted in workplace.

1. With power source disconnected from tool, securely fasten abrasive/accessory on tool.
2. Connect power source to tool. Be careful not to depress throttle lever in the process.
3. Check tool speed with tachometer. If tool is operating at a higher speed than the RPM marked on the tool or operating improperly, the tool should be serviced to correct the cause before use.

Maintenance Instructions:

1. Check tool speed regularly with a tachometer. If tool is operating at a higher speed than the RPM marked on the tool, the tool should be serviced to correct the cause before use.
2. Some silencers on air tools may clog with use. Clean and replace as required.
3. All Dynabrade air motors should be lubricated with two drops of Dynabrade Air Lube (P/N 95842: 1pt. 473ml.) every four hours of use.
4. An air line filter-regulator-lubricator must be used with this air tool to maintain all warranties. Dynabrade recommends the following:
11289 Air Line Filter- Regulator-Lubricator — Provides accurate air pressure regulation, two-stage filtration of water contaminants and micro-mist lubrication of pneumatic components. Operates 28 CFM @ 90 PSI has 3/8" NPT female ports.

Safety Instructions:

- **Important:** User of tool is responsible for following accepted safety codes such as those published by the American National Standards Institute (ANSI).
- Operate machine for one minute before application to workpiece to determine if machine is working properly and safely before work begins.
- Always disconnect power supply before changing abrasive/accessory or making machine adjustments.
- Inspect abrasives/accessory for damage or defects prior to installation on tools.
- Please refer to Dynabrade's Warning/Safety Operating Instructions Tag (Reorder No. 95903) for more complete safety information.
- **Warning:** Hand, wrist and arm injury may result from repetitive work, motion and overexposure to vibration.

